

STRAUMANN TLX™ IMPLANT SYSTEM

Iconic tissue level
meets immediacy.



ICONIC TISSUE LEVEL MEETS IMMEDIACY

The design of the Straumann TLX™ Implant takes into account key biological principles of hard and soft tissue healing. It is designed to significantly reduce the risk of inflammation and bone resorption as the implant-abutment interface is moved away from the bone.

Straumann TLX™ has been perfected for immediacy and is an excellent solution for all other indications to suit the dentist's preferred treatment protocol – ranging from immediate to conventional placement and loading.

The Straumann TLX™ Implant System perfectly complements our bone-level BLX Implant System. Both systems use one common drill set and TorcFit™ connection for maximum compatibility with minimum investment.

PERFORMANCE THAT CARES



Straumann® SLActive® surface demonstrates 100% implant survival rate, even in patients compromised by smoking, diabetes, or radiation therapy.¹⁻³



Straumann® Roxolid® alloy is stronger and biologically superior to titanium enabling less invasive and bone preserving treatment options using smaller, stronger implants.⁴⁻⁷



"I like to explore digital systems and breakthrough technologies."

Digitally driven and fast: Straumann TLX™ slots into your guided workflow for easy placement, few drilling steps, and immediate stability with one connection, enabling precise, traceable, end-to-end execution.



DESIGNED FOR IMMEDIATE PROTOCOLS

- Fully tapered implant design for optimized primary stability combined with the predictability of Tissue Level Implant
- A narrow implant diameter option, 3.75 mm for all indications



PERI-IMPLANT HEALTH PRESERVATION

- Reduced risk of nesting bacteria
- Optimized cleansability with the connection at the soft-tissue level
- Immediate soft-tissue attachment preservation



SIMPLICITY AND EFFICIENCY

- A one-stage process with restoration at soft-tissue level allows you to use chair time more efficiently
- Ease of restoration even in the posterior region
- Highly efficient treatment protocol thanks to straightforward conventional and digitally integrated workflows



DYNAMIC BONE MANAGEMENT

- Redistribution of native bone and control over insertion torque



REAL CONFIDENCE

- Swiss precision and quality with Roxolid® material and SLActive® surface



“Every single time using TLX, I am left amazed and surprised with the results. I am experiencing a soft tissue response that I have never seen before. Following the same protocols as I always did, instead of good results we now have even better outcomes. The fundamental enhancement is unbelievable tissue response, and in challenging areas the tissue forgiveness is superb. For this reason I just can’t stop using it. My full arch and single tooth experience with TLX is very rewarding, not only for me but for our patients. Many times over the years with immediacy; I wished for a product like TLX.”

Dr. Abid Faqir, United Kingdom

DESIGNED FOR IMMEDIATE PROTOCOLS

The intelligent implant concept developed for optimal primary stability and immediate protocols in all bone types.

DYNAMIC BONE MANAGEMENT

1 VARIABLE THREAD DESIGN

Thin and progressive thread design for high primary stability and efficient insertion.

2 SLIM AND FULLY TAPERED IMPLANT CORE

Allows for small and undersized osteotomy

3 FULL-LENGTH DYNAMIC CHIP FLUTE

Collects and condenses native bone chips and distributes them around the implant body.

4 BI-DIRECTIONAL CUTTING ELEMENTS

Designed for reverse and forward cutting control and flexibility during implant insertion

5 DEEP APICAL THREADS

Large anchoring surface for immediate engaging and stability.

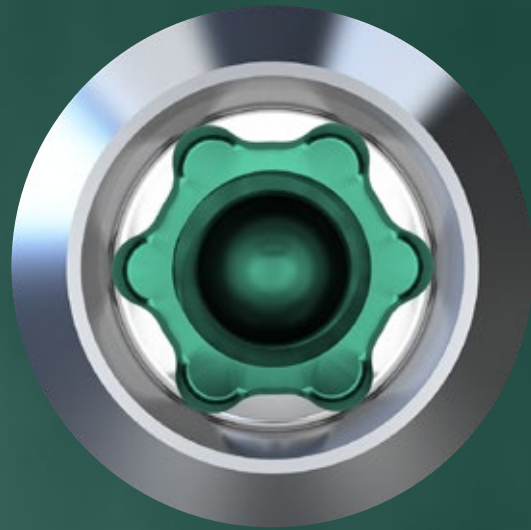


TORCFIT™ CONNECTION

Internal conical connection engineered for high strength and slim abutment designs.

“After 5 years of using BLX, I can say that the TorcFit™ connection is awesome – crestal bone stability is outstanding.”

Dr. Algirdas Puisys, Lithuania



STRENGTH OF TORX INDEX

- Allows transfer of high torques
- Six positions for flexible implant-abutment alignment

PRECISE FIT OF 7° CONICAL CONNECTION

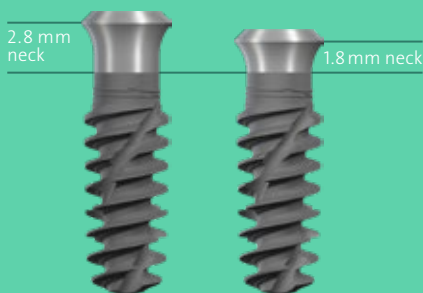
- Precise implant-abutment fit
- Abutment screw only engages in implant when the abutment is correctly seated
- Correctly seated abutments are secured with friction fit
- High mechanical stability and stress distribution

ONE SIZE PROSTHETIC CONNECTION ACROSS ALL IMPLANTS

- One single driver for all implants
- Lower prosthetic inventory
- Simpler staff training

VERSATILE PORTFOLIO FOR MORE TREATMENT OPTIONS

2 neck heights



Two neck heights to facilitate different gingiva situations

TorcFit™ connection. Wide range of implant diameters and lengths



EXCELLENCE THROUGH COMPLETE PROSTHETIC PORTFOLIO

ALL INDICATIONS AND DIGITAL WORKFLOWS



Ease of handling

- Simple abutment placement and visibility at the soft-tissue level
- Easy handling of direct-to-implant restorations



Patient comfort

- Elevated collar with platform above gingiva means no pushback seating prosthetics and no discomfort removing healing abutments



STRAUMANN® VARIOBASE® XC

Building on the clinically proven performance of Variobase®, Variobase® XC features a tall chimney and enhanced abutment-crown bonding strength designed to reduce the risk of debonding while eliminating the need for sandblasting. The comprehensive portfolio includes angled screw-channel options and a range of gingiva heights for single tooth to edentulous indications.



PRE-MILLED ABUTMENT BLANKS

Pre-milled abutment blanks enable in-house manufacturing of one-piece custom abutments. With a pre-machined original Straumann® connection, precision and reliability are assured.



CUSTOMIZED PROSTHETICS

Customized prosthetics ensure ultimate restorative outcomes, with the abutment emergence profile and shape specifically designed for your patient. The screw-retained bar and bridge offer angle correction to solve the most demanding cases.



STRAUMANN® NOVALOC® RETENTIVE SYSTEM

Unique combination of ADLC-coated abutments and PEEK matrix inserts ensure low friction and excellent durability. The system accommodates up to 60° implant divergence, and offers multiple abutment heights and six retention strengths.

CUSTOMIZE AS NEEDED

Our award-winning Modular Cassette is a customizable instrument cassette designed to blend into your clinic's daily workflow, allowing surgeons and assistants to work together efficiently.

STRAUMANN® MODULAR CASSETTE

The Straumann® Modular Cassette is a compact instrument set which can be assembled and combined in different ways, allowing you to customize your kit with the tools you need.

- Module A: for universal and prosthetic instruments
- Module B: for workflow and drills – one insert that works with all Straumann iEXCEL™ implants
- Module C: add-on for guided surgery (handles) or a simple box for auxiliaries

STRAUMANN® PROCLEAN™ CASSETTE

- Metal cassette for uncompromised hygiene



STRAUMANN® VELODRILL™

The VeloDrill™ system enables you to use a single drill set that works with all Straumann iEXCEL™ implant designs.

FLEXIBLE

Shared instrumentation for freehand and guided surgery with both X and C designs.

SIMPLE

Drills are color-coded for easy identification of diameters.

COOL

Low-temperature drilling. Avoids overheating surrounding structures.



STRAUMANN iGUIDE™

Straumann iGuide™ is the guided system for the Straumann iEXCEL™ implant line.

SEAMLESS INTEGRATION WITH STRAUMANN iEXCEL™

One system, four implant designs, fully connected to the digital ecosystem.

STRAIGHTFORWARD AND INTUITIVE

Keyless drills, pictograms, and color coding make every step simple and predictable.

PROSTHETIC-DRIVEN CONFIDENCE

Digitally planned, fully guided workflows reduce risk and improve outcomes.



EXCEL WITH THE STRAUMANN® DIGITAL ECOSYSTEM FROM SINGLE UNIT TO FULL-ARCH

The Straumann® digital ecosystem your growth with a comprehensive range of seamlessly and open solutions, streamlining and upgrading your workflow for the final benefit of your patients. You can confidently rely on a single provider for all your implant procedures.

SCAN



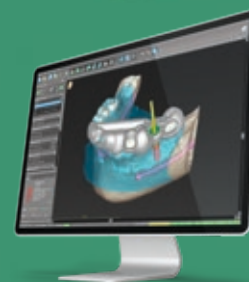
Straumann SIRIOS™ X3

ENGAGE



Smilecloud

PLAN



coDiagnostiX®

Smile in a Box®



STRAUMANN SIRIOS™ X3

Go beyond image capturing and open the door to digital dentistry with Straumann SIRIOS™ X3; with ultimate accuracy and a revolutionary scanning performance, it is specifically designed to unlock streamlined digital workflows.

SMILECLOUD

Captivate your patients through natural biometric smile design and effectively engage your network with the potential of interdisciplinary workflows. Start today with Smilecloud!

CODIAGNOSTIX®

Unlock the potential of treatment planning with coDiagnostiX® including AI-powered data preparation, visualization and automated tooth extraction designed to efficiently access immediate treatments.



FLEXIBILITY

From single unit to edentulous cases, with our solutions you have the right tools to streamline your workflow.



EFFICIENCY

Implement streamlined workflows that are designed to promote speed and quality in your treatment.



PREDICTABILITY

Boost your confidence with digital treatment planning and guided procedures designed to achieve predictable results.



EXCELLENCE POWERED BY AI

Our solutions are infused with AI to empower you to achieve your goals with efficiency and speed.

PLACE

2ND SCAN

PRODUCE



Straumann iEXCEL™



Straumann SIRIOS™ X3



Straumann UNIQ™



Straumann® Variobase® XC

SMILE IN A BOX®

Outsource planning, design, and/or manufacturing and access immediate treatment protocols without requiring additional hardware and software investments.

STRAUMANN UNIQ™*

Use a premium service to outsource the planning, design, and manufacturing of your custom implant prosthetics on demand, based on your specific needs.

*The availability varies by region; contact local team for details.

STRAUMANN iEXCEL™

UNLEASH YOUR POWER

Straumann iEXCEL™ is our ultimate Dental Performance System. Versatility of four implant designs in a single system. Simplicity of one prosthetic connection. Integrated digital workflows and services that help save your time.

* TRUE CLINICAL VERSATILITY

With four implant designs in one single instrument set, you're able to choose the right option to tackle most patient situations, even during surgery. The SLActive® surface excels even for patients who are compromised by smoking, diabetes, or radiation therapy.¹⁻³

* SIMPLICITY YOU'LL LOVE

One TorcFit™ connection for all four implant designs sharing the same connection diameter for all prosthetics. Profit from restorative simplicity with a complete range of Straumann® original stock and customized prosthetics.

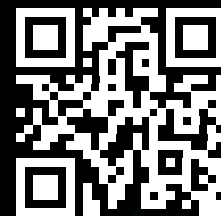
* CONNECTED DENTISTRY TO EMPOWER EXCELLENCE

Our system offers integrated digital workflows and services designed to deliver predictable, efficient and high-quality outcomes, from single to full arch indications.

84%

of clinicians who tried the iEXCEL
system would switch to it*

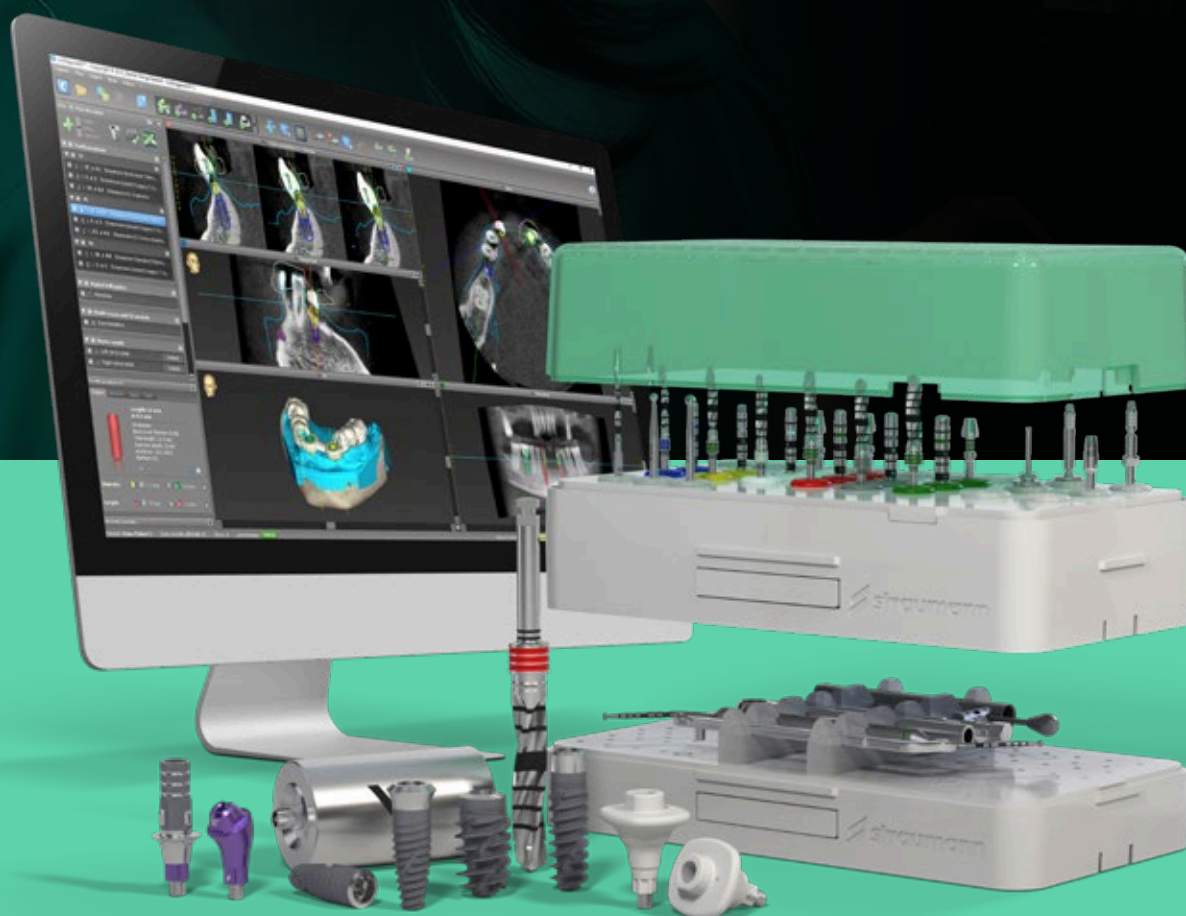
*n=50, Jan 2024, Satisfaction survey with clinicians from Europe.



Discover
Straumann iEXCEL™

** "I want to create flawlessly executed work where every detail reflects my craftsmanship."*

Straumann iEXCEL™ elevates precision and esthetics: four implant designs, one connection for seamless control, plus integrated digital workflows that protect detail, reduce remakes, and give you more time to perfect the finish.



STRAUMANN® REGENERATIVE SOLUTIONS MASTER ANY CHALLENGE

To ensure clinical success, dental implants require stable and healthy hard and soft tissue. Straumann® Regenerative Solutions regenerate the hard and soft tissue around teeth or dental implants, to maintain long-lasting functionality and esthetics. Our solutions are built on three pillars along the patient's dental journey, and cover the entire range of cases, from simple to complex.





TOOTH PRESERVATION

Natural teeth are unique and, as dental professionals, we strive to preserve them as long as possible. Untreated inflammation can advance to periodontitis and potentially result in tooth loss.

Straumann® Emdogain® is a central part of our solution to support the effective regeneration of the periodontium and accelerate the healing to help maintain natural teeth.



IMPLANT SITE MANAGEMENT

The right amount of hard and soft tissue is key for successful dental implant placement. Our solution includes a comprehensive biomaterials portfolio to support tissue regeneration for optimal implant placement conditions.



IMPLANT PRESERVATION

Healthy peri-implant tissues are vital to preserve the placed implant. Untreated inflammation can advance to peri-implantitis and potentially result in implant loss. GalvoSurge® is a central part of our solution to support the effective regeneration of hard and soft tissue to help maintain dental implants.

GALVOSURGE® DENTAL IMPLANT CLEANING SYSTEM

- **Speed:** effectively removes biofilm from the implant surface in just 2 minutes
- **Reliability:** provides optimal conditions for bone regeneration
- **Safety:** offers a minimally invasive treatment process to successfully treat peri-implantitis without implant removal



DRIVEN TO EXCEL

FOR YOU AND YOUR PATIENTS

A comprehensive array of products, solutions, and services made Straumann® a leader in the global market for implant, restorative, and regenerative dentistry. With a focus on digital, seamless workflows, Straumann® provides an end-to-end, customer-centric treatment experience. An integrated ecosystem enhances efficiency, convenience, and collaboration, supporting dental professionals with secure data storage and sharing, and leveraging evidence-based and data-driven processes.

Available in more than 100 countries, the Straumann® brand is associated with Swiss quality, precision, and innovation, fostering confidence among dental professionals, supported by the world's largest global scientific network and a partnership with the International Team for Implantology (ITI).



Straumann® is the flagship brand of the world's largest implant manufacturer group – the Straumann Group. Renowned as one of the most iconic brands in dentistry, we have a long-standing legacy of pioneering significant advancements in the field. We are at the forefront of expanding the scope of dental care by relentlessly and consistently providing excellence and transformational innovation to a global community of forward-thinking dental professionals.



CLINICAL CASES

Maxillary molar replacement using a Straumann TLX™ implant and an immediate restoration: 5-year follow-up

Replacement of a missing maxillary molar using a Straumann TLX™ implant Ø5.0×8 mm, SLActive® Roxolid® with immediate provisional restoration. After a 3-month healing period, a digitally fabricated, screw-retained full-frame zirconia crown on a Variobase® was placed. At the 5-year follow-up, stable peri-implant tissues and maintained bone levels were observed, confirming a predictable long-term outcome.



Dr. Leandro Soeiro Nunes
MD, DMD



Initial clinical situation - site #16



Freehand placement of a Straumann TLX™ implant Ø5.0×8 mm, SLActive® Roxolid®



Clinical situation following implant placement



Immediate provisional crown in situ with sutures



Digitally fabricated final crown on a Variobase®, ready for placement



Final crown in situ, buccal view, showing a favorable clinical outcome



Five-year follow-up demonstrating stable peri-implant soft tissues



Five-year follow-up radiograph showing stable peri-implant bone levels

Straumann TLX™ for immediate replacement of single maxillary molar

Immediate replacement of a single maxillary molar following extraction of a non-restorable tooth with a vertical root fracture. Immediate implant placement was performed using a Straumann TLX™ implant Ø5.5×8 mm, SLActive® Roxolid®, achieving high primary stability. A screw-retained provisional restoration was delivered out of occlusion to support soft tissue healing. Following uneventful healing, the definitive screw-retained restoration was delivered, showing stable peri-implant conditions and predictable outcomes.



Prof. Waldemar D. Polido,
DDS, MS, PhD



Prof. Wei-Shao Lin
DDS, PhD



Prof. Dean Morton
DDS, MS, USA.

Immediate rehabilitation of the edentulous mandible with Straumann Pro Arch™ TLX

Freehand surgery for the placement of six Straumann TLX™ implants Ø 3.75 mm. Following implant placement, the patient received an immediate temporary rehabilitation, ensuring rapid restoration of function and aesthetics.



**Dr. Leonello
Biscaro**



Initial situation



Acrylic multifunctional guide in place



Placement of the Straumann TLX™ implants Ø 3.75 mm, 8 mm, 12 mm, 10 mm, 14 mm length, Roxolid®, SLActive®



Full-arch TLX implants placed



Temporary abutments on working model



Immediate full-arch provisional restoration



X-ray of the final restoration in situ



Definitive full-arch restoration



Initial situation of tooth #26



Prosthetically driven digital planning



Fully guided placement of a Straumann TLX™ implant, Ø 5.5×8 mm, SLActive® Roxolid®



Implant in situ achieving high primary stability (≥ 45 Ncm)



Immediate screw-retained provisional crown in place



Healthy, well-contoured peri-implant soft tissues after 2 months of healing, ready for IOS



Occlusal view of the final screw-retained full-frame zirconia crown on a Variobase®



Buccal view of tooth position #26 showing a favorable clinical outcome

STRAUMANN TLX™ IMPLANT SYSTEM – ICONIC TISSUE LEVEL MEETS IMMEDIACY.

We have built upon our well-established, scientifically-proven Straumann Tissue™ Level System to take it to the next level.

REFERENCES

1 Ioannidis, A., et al., Titanium-zirconium narrow-diameter versus titanium regular-diameter implants for anterior and premolar single crowns: 3-year results of a randomized controlled clinical study. *J Clin Periodontol*, 2015. 42(11): p. 1060-70. 2 Al-Nawas, B., et al., A Prospective Noninterventional Study to Evaluate Survival and Success of Reduced Diameter Implants Made From Titanium-Zirconium Alloy. *J Oral Implantol*, 2015. 41(4): p. e118-25. 3 Altuna, P., et al., Clinical evidence on titanium-zirconium dental implants: a systematic review and meta-analysis. *Int J Oral Maxillofac Surg*, 2016. 45(7): p. 842-50. 4 Nicolau, P., et al., 10-year outcomes with immediate and early loaded implants with a chemically modified SLA surface. *Quintessence international* (Berlin, Germany : 1985), 2019. 50(2): p. 114-124. 5 Heberer, S., et al., Rehabilitation of irradiated patients with modified and conventional sandblasted acid-etched implants: preliminary results of a split-mouth study. *Clin Oral Implants Res*, 2011. 22(5): p. 546-51. 6 Nelson K, Stricker A, Raguse JD, Nahles S. Rehabilitation of irradiated patients with chemically modified and conventional SLA implants: a clinical clarification. *J Oral Rehabil*. 2016 Nov;43(11):871-872. doi: 10.1111/joor.12434. Epub 2016 Sep 27. PMID: 27670370. 7 El Chaar, E., et al., Osseointegration of Superhydrophilic Implants Placed in Defect Grafted Bones. *Int J Oral Maxillofac Implants*, 2019. 34(2): p. 443–450. 8 Norm ASTM F67 (states min. tensile strength of annealed titanium); data on file for Straumann cold-worked titanium and Roxolid® implants. 9 Kopf, B.S., et al., Enhanced differentiation of human osteoblasts on Ti surfaces pre-treated with human whole blood. *Acta Biomater*, 2015. 19: p. 180-90. 10 Derks, J., et al., Effectiveness of Implant Therapy Analyzed in a Swedish Population: Prevalence of Peri-implantitis. *Journal of dental research*, 2016. 95(1): p. 43-49. 11 Hermann, J.S., et al., Biologic width around titanium implants. A physiologically formed and stable dimension over time. *Clin Oral Implants Res*, 2000. 11(1): p. 1-11. 12 Hermann, J.S., et al., Biologic Width around one- and two-piece titanium implants. *Clin Oral Implants Res*, 2001. 12(6): p. 559-71. 13 Raghavendra, S., M.C. Wood, and T.D. Taylor, Early wound healing around endosseous implants: a review of the literature. *Int J Oral Maxillofac Implants*, 2005. 20(3): p. 425-31. 14 Lang, N.P., et al., Early osseointegration to hydrophilic and hydrophobic implant surfaces in humans. *Clin Oral Implants Res*, 2011. 22(4): p. 349-56. 15 Oates, T.W., et al., Enhanced implant stability with a chemically modified SLA surface: a randomized pilot study. *Int J Oral Maxillofac Implants*, 2007. 22(5): p. 755-60. 16 Nicolau, P., et al., 10-year outcomes with immediate and early loaded implants with a chemically modified SLA surface. *Quintessence Int*. 2019 Jan 25;50(2):p. 114-124. 17 Reis, R., et al., Immediate versus early loading protocols of titanium-zirconium narrow-diameter implants for mandibular overdentures in edentulous patients: 1-year results from a randomized controlled trial. *Clin Oral Implants Res*. 2019 Oct;30(10):953-961. 18 Eckert, S.E., et al., Immediately Loaded Fixed Full-Arch Implant-Retained Prosthesis: Clinical Analysis When Using a Moderate Insertion Torque. *Int J Oral Maxillofac Implants*. 2019 May/June;34(3):737–744.



International Headquarters

Institut Straumann AG
Peter Merian-Weg 12
CH-4002 Basel, Switzerland
Phone +41 (0)61 965 11 11
Fax +41 (0)61 965 11 01
www.straumann.com

© Institut Straumann AG, 2026. All rights reserved.

Straumann® and/or other trademarks and logos from Straumann® mentioned herein are the trademarks or registered trademarks of Straumann Holding AG and/or its affiliates.

iEXCEL 
STRAUMANN® PERFORMANCE SYSTEM

 **straumann**