

# STRAUMANN BLX™ IMPLANT SYSTEM

Confidence beyond Immediacy.



# CONFIDENCE BEYOND IMMEDIACY

Straumann BLX™ has been designed for immediacy, and is also suitable for all other treatment protocols, ranging from immediate to conventional placement and loading, to suit the dentist's preference.

Straumann BLX™ with Dynamic Bone Management has been specifically developed to make immediate protocols achievable, predictable and minimally invasive in all bone types. It delivers real confidence in and for dentists through the combination of legacy, Swiss premium quality, precision and pioneering innovation backed by long-term scientific evidence.

With its esthetic ease concept comprising one connection with slim and under-contoured prosthetic components, the entire portfolio is simple without compromising on versatility. Straumann BLX™ System lets you discover and capitalize on new business opportunities by using chair-time more efficiently to treat more patients with confidence.

## PERFORMANCE THAT CARES



Straumann® SLActive® surface demonstrates 100% implant survival rate, even in patients compromised by smoking, diabetes, or radiation therapy.<sup>1-3</sup>



Straumann® Roxolid® alloy is stronger and biologically superior to titanium enabling less invasive and bone preserving treatment options using smaller, stronger implants.<sup>4-7</sup>



*"I want to build a thriving, scalable practice that delivers excellence at every level."*

*Straumann BLX™ performs in immediate cases with few steps and one connection, so you seat provisional now, cut changeovers, and treat more patients today.*



## DYNAMIC BONE MANAGEMENT

Redistribution of native bone and control over insertion torque to achieve optimal primary stability.



## ESTHETIC EASE CONCEPT

Simplified but versatile portfolio, featuring one connection and under-contoured prosthetics.



## REAL CONFIDENCE

Swiss precision and quality with Roxolid® material and SLActive® surface.

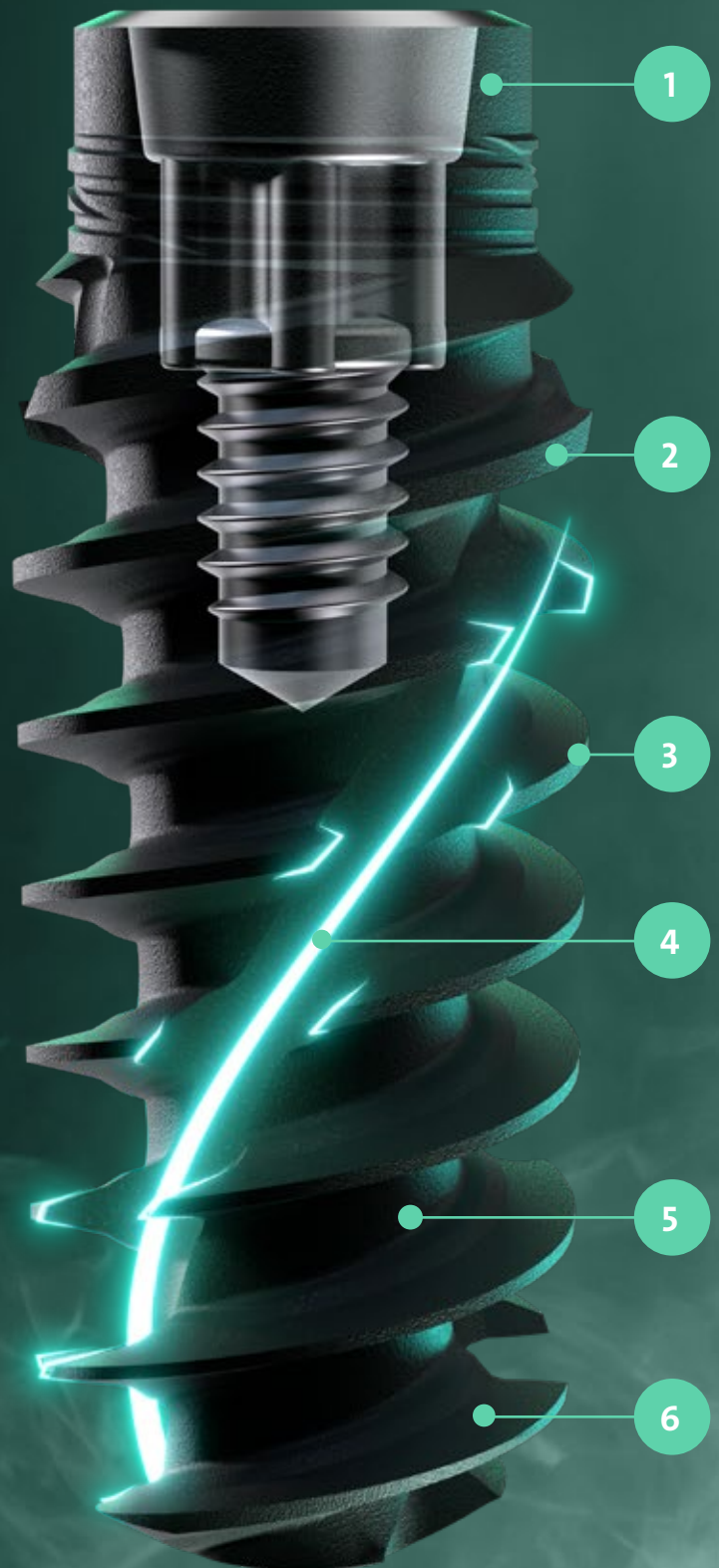


*For immediate protocols I want products that provide me with peace of mind in demanding clinical situations. Straumann BLX™ Implants with Roxolid® and SLActive® give me that confidence. BLX is exciting because it extends the treatment options we can offer with Straumann® products. It's a new era of implant treatment.*

**Dr. Eirik Salvesen, Norway.**

# DYNAMIC BONE MANAGEMENT

The intelligent implant concept developed for optimal primary stability and immediate protocols in all bone types.



## 1 REDUCED NECK DIAMETER

Designed to reduce stress on crestal bone and to facilitate slightly subcrestal implant placement

## 2 VARIABLE THREAD DESIGN

Thin and progressive thread design for high primary stability and efficient insertion.

## 3 BI-DIRECTIONAL CUTTING ELEMENTS

Designed for reverse and forward cutting control and flexibility during implant insertion

## 4 FULL LENGTH DYNAMIC CHIP FLUTE

Collects and condenses native bone chips and distributes them around the implant body

## 5 SLIM AND FULLY TAPERED IMPLANT CORE

Allows for small and undersized osteotomy

## 6 DEEP APICAL THREADS

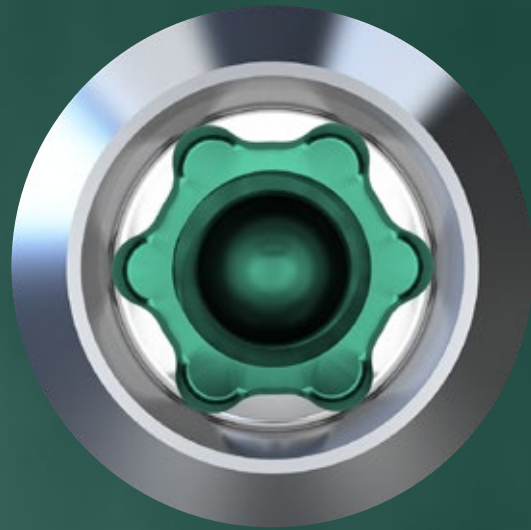
Large anchoring surface for immediate engaging and stability

# TORCFIT™ CONNECTION

Internal conical connection engineered for high strength and slim abutment designs.

*“After 5 years of using BLX, I can say that the TorcFit™ connection is awesome – crestal bone stability is outstanding.”*

Dr. Algirdas Puisys, Lithuania



## STRENGTH OF TORX INDEX

- Allows transfer of high torques
- Six positions for flexible implant-abutment alignment

## PRECISE FIT OF 7° CONICAL CONNECTION

- Precise implant-abutment fit
- Abutment screw only engages in implant when the abutment is correctly seated
- Correctly seated abutments are secured with friction fit
- High mechanical stability and stress distribution

## ONE SIZE PROSTHETIC CONNECTION ACROSS ALL IMPLANTS

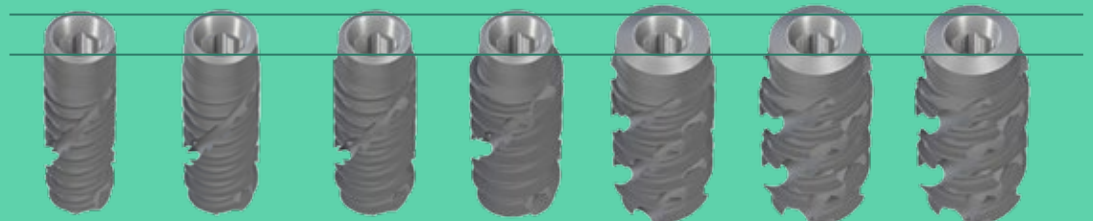
- One single driver for all implants
- Lower prosthetic inventory
- Simpler staff training

# VERSATILE PORTFOLIO FOR MORE TREATMENT OPTIONS



Dynamic Bone Management around the implant

Ø 3.5 mm    Ø 3.75 mm    Ø 4.0 mm    Ø 4.5 mm    Ø 5.0 mm    Ø 5.5 mm    Ø 6.5 mm



8–18 mm    6–18 mm    6–18 mm    6–18 mm    6–18 mm    6–16 mm    6–16 mm

# EXCELLENCE THROUGH COMPLETE PROSTHETIC PORTFOLIO

ALL INDICATIONS AND DIGITAL WORKFLOWS

**Consistent Emergence Profiles™**  
throughout the full portfolio,  
for easy soft-tissue conditioning  
across all indications.



## STRAUMANN® FAST MOLAR SOLUTION



The Straumann® Anatomic Healing Abutment XC combines an anatomically shaped healing abutment with a scan body, enabling the capture of implant position and the sub-gingival emergence profile in a single tissue-level scan. Increasing workflow efficiency while minimizing soft tissue interventions.

## STRAUMANN® VARIOBASE® XC



Building on the clinically proven performance of Variobase®, Variobase® XC features a tall chimney and enhanced abutment-crown bonding strength designed to reduce the risk of debonding while eliminating the need for sandblasting. The comprehensive portfolio includes angled screw-channel options and a range of gingiva heights for single tooth to edentulous indications.

## PRE-MILLED ABUTMENT BLANKS



Pre-milled abutment blanks enable in-house manufacturing of one-piece custom abutments. With a pre-machined original Straumann® connection, precision and reliability are assured.

## STRAUMANN UNIQ™ CUSTOMIZED PROSTHETICS



Ensure ultimate restorative outcomes with the abutment emergence profile and shape specifically designed for your patient. For the most demanding cases, angle correction is available for abutments as well as screw-retained bars and bridges.

## SCREW RETAINED ABUTMENTS (SRA) FOR BRIDGES AND FULL-ARCH



The smooth, cleanable and undercontoured design reduces the need for bone profiling in surgery and is designed to maximize space for soft tissue.

## STRAUMANN® NOVALOC® RETENTIVE SYSTEM



Unique combination of ADLC-coated abutments and PEEK matrix inserts ensure low friction and excellent durability. The system accommodates up to 60° implant divergence, and offers multiple abutment heights and six retention strengths.

# CUSTOMIZE AS NEEDED

Our award-winning Modular Cassette is a customizable instrument cassette designed to blend into your clinic's daily workflow, allowing surgeons and assistants to work together efficiently.

## STRAUMANN® MODULAR CASSETTE

The Straumann® Modular Cassette is a compact instrument set which can be assembled and combined in different ways, allowing you to customize your kit with the tools you need.

- Module A: for universal and prosthetic instruments
- Module B: for workflow and drills – one insert that works with all Straumann iEXCEL™ implants
- Module C: add-on for guided surgery (handles) or a simple box for auxiliaries

### STRAUMANN® PROCLEAN™ CASSETTE

- Metal cassette for uncompromised hygiene



# STRAUMANN® VELODRILL™

The VeloDrill™ system enables you to use a single drill set that works with all Straumann iEXCEL™ implant designs.

## FLEXIBLE

Shared instrumentation for freehand and guided surgery with both X and C designs.

## SIMPLE

Drills are color-coded for easy identification of diameters.

## COOL

Low-temperature drilling. Avoids overheating surrounding structures.



# STRAUMANN iGUIDE™

Straumann iGuide™ is the guided system for the Straumann iEXCEL™ implant line.

## SEAMLESS INTEGRATION WITH STRAUMANN iEXCEL™

One system, four implant designs, fully connected to the digital ecosystem.

## STRAIGHTFORWARD AND INTUITIVE

Keyless drills, pictograms, and color coding make every step simple and predictable.

## PROSTHETIC-DRIVEN CONFIDENCE

Digitally planned, fully guided workflows reduce risk and improve outcomes.



# EXCEL WITH THE STRAUMANN® DIGITAL ECOSYSTEM FROM SINGLE UNIT TO FULL-ARCH

The Straumann® digital ecosystem your growth with a comprehensive range of seamlessly and open solutions, streamlining and upgrading your workflow for the final benefit of your patients. You can confidently rely on a single provider for all your implant procedures.

## SCAN



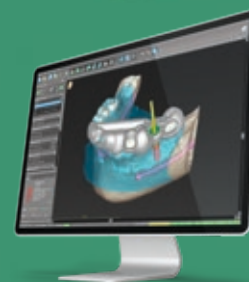
Straumann SIRIOS™ X3

## ENGAGE



Smilecloud

## PLAN



coDiagnostiX®

Smile in a Box®



### STRAUMANN SIRIOS™ X3

Go beyond image capturing and open the door to digital dentistry with Straumann SIRIOS™ X3; with ultimate accuracy and a revolutionary scanning performance, it is specifically designed to unlock streamlined digital workflows.

### SMILECLOUD

Captivate your patients through natural biometric smile design and effectively engage your network with the potential of interdisciplinary workflows. Start today with Smilecloud!

### CODIAGNOSTIX®

Unlock the potential of treatment planning with coDiagnostiX® including AI-powered data preparation, visualization and automated tooth extraction designed to efficiently access immediate treatments.



## FLEXIBILITY

From single unit to edentulous cases, with our solutions you have the right tools to streamline your workflow.



## PREDICTABILITY

Boost your confidence with digital treatment planning and guided procedures designed to achieve predictable results.



## EFFICIENCY

Implement streamlined workflows that are designed to promote speed and quality in your treatment.



## EXCELLENCE POWERED BY AI

Our solutions are infused with AI to empower you to achieve your goals with efficiency and speed.

## PLACE

## 2<sup>ND</sup> SCAN

## PRODUCE



Straumann iEXCEL™



Straumann SIRIOS™ X3



Straumann UNIQ™



Straumann EXACT™



Straumann® Anatomic Healing Abutment XC



Straumann® Variobase® XC

### SMILE IN A BOX®

Outsource planning, design, and/or manufacturing and access immediate treatment protocols without requiring additional hardware and software investments.

### STRAUMANN EXACT™

Straumann EXACT™ offers a fully digital, cost-effective full-arch workflow. BASE scanbodies and LINKS enable precise SRA scanning, seamlessly integrating with Straumann AXS™ for accuracy, efficiency, and flexibility without costly photogrammetry.

### STRAUMANN UNIQ™\*

Use a premium service to outsource the planning, design, and manufacturing of your custom implant prosthetics on demand, based on your specific needs.

\*The availability varies by region; contact local team for details.

STRAUMANN iEXCEL™

# UNLEASH YOUR POWER

Straumann iEXCEL™ is our ultimate Dental Performance System. Versatility of four implant designs in a single system. Simplicity of one prosthetic connection. Integrated digital workflows and services that help save your time.

## \* TRUE CLINICAL VERSATILITY

With four implant designs in one single instrument set, you're able to choose the right option to tackle most patient situations, even during surgery. The SLActive® surface excels even for patients who are compromised by smoking, diabetes, or radiation therapy.<sup>1-3</sup>

## \* SIMPLICITY YOU'LL LOVE

One TorcFit™ connection for all four implant designs sharing the same connection diameter for all prosthetics. Profit from restorative simplicity with a complete range of Straumann® original stock and customized prosthetics.

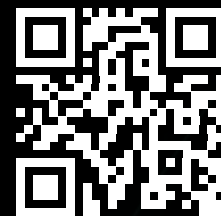
## \* CONNECTED DENTISTRY TO EMPOWER EXCELLENCE

Our system offers integrated digital workflows and services designed to deliver predictable, efficient and high-quality outcomes, from single to full arch indications.

# 84%

of clinicians who tried the Straumann iEXCEL™ system would switch to it\*

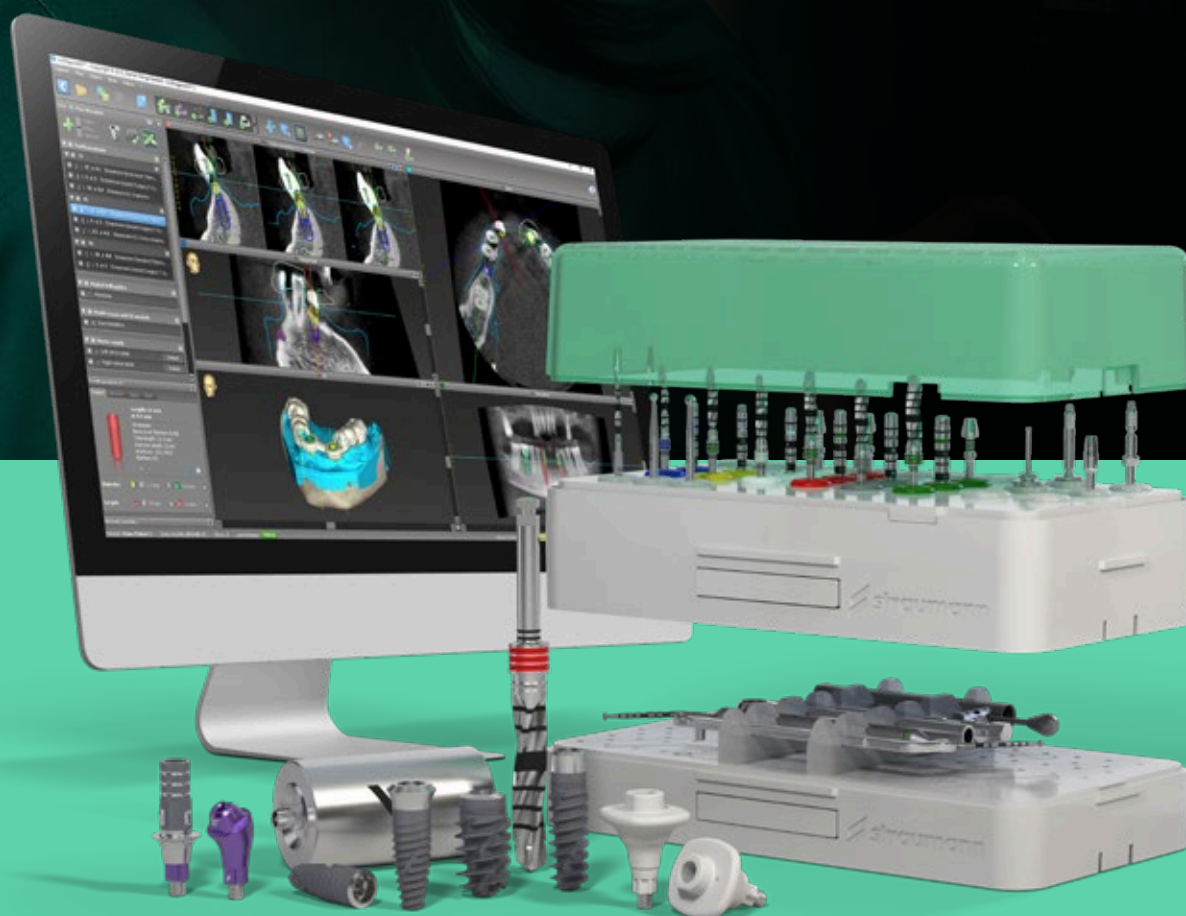
\*n=50, Jan 2024, Satisfaction survey with clinicians from Europe.



Discover  
Straumann iEXCEL™

*\* "I want to create flawlessly executed work where every detail reflects my craftsmanship."*

*Straumann iEXCEL™ elevates precision and esthetics: four implant designs, one connection for seamless control, plus integrated digital workflows that protect detail, reduce remakes, and give you more time to perfect the finish.*



# STRAUMANN® REGENERATIVE SOLUTIONS MASTER ANY CHALLENGE

To ensure clinical success, dental implants require stable and healthy hard and soft tissue. Straumann® Regenerative Solutions regenerate the hard and soft tissue around teeth or dental implants, to maintain long-lasting functionality and esthetics. Our solutions are built on three pillars along the patient's dental journey, and cover the entire range of cases, from simple to complex.





## TOOTH PRESERVATION

Natural teeth are unique and, as dental professionals, we strive to preserve them as long as possible. Untreated inflammation can advance to periodontitis and potentially result in tooth loss.

Straumann® Emdogain® is a central part of our solution to support the effective regeneration of the periodontium and accelerate the healing to help maintain natural teeth.



## IMPLANT SITE MANAGEMENT

The right amount of hard and soft tissue is key for successful dental implant placement. Our solution includes a comprehensive biomaterials portfolio to support tissue regeneration for optimal implant placement conditions.



## IMPLANT PRESERVATION

Healthy peri-implant tissues are vital to preserve the placed implant. Untreated inflammation can advance to peri-implantitis and potentially result in implant loss. GalvoSurge® is a central part of our solution to support the effective regeneration of hard and soft tissue to help maintain dental implants.

# GALVOSURGE® DENTAL IMPLANT CLEANING SYSTEM

- **Speed:** effectively removes biofilm from the implant surface in just 2 minutes
- **Reliability:** provides optimal conditions for bone regeneration
- **Safety:** offers a minimally invasive treatment process to successfully treat peri-implantitis without implant removal



# DRIVEN TO EXCEL

FOR YOU AND YOUR PATIENTS

A comprehensive array of products, solutions, and services made Straumann® a leader in the global market for implant, restorative, and regenerative dentistry. With a focus on digital, seamless workflows, Straumann® provides an end-to-end, customer-centric treatment experience. An integrated ecosystem enhances efficiency, convenience, and collaboration, supporting dental professionals with secure data storage and sharing, and leveraging evidence-based and data-driven processes.

Available in more than 100 countries, the Straumann® brand is associated with Swiss quality, precision, and innovation, fostering confidence among dental professionals, supported by the world's largest global scientific network and a partnership with the International Team for Implantology (ITI).



Straumann® is the flagship brand of the world's largest implant manufacturer group – the Straumann Group. Renowned as one of the most iconic brands in dentistry, we have a long-standing legacy of pioneering significant advancements in the field. We are at the forefront of expanding the scope of dental care by relentlessly and consistently providing excellence and transformational innovation to a global community of forward-thinking dental professionals.



# CLINICAL CASES

## Immediate implant placement in the esthetic zone: 2-year follow-up

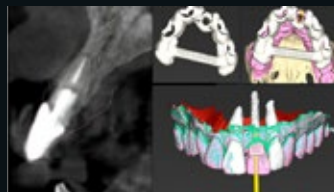
Treatment of a hopeless anterior tooth using the Straumann BLX™ implant. Immediate implant placement and loading were performed, with a follow-up period of two years after the delivery of the definitive restoration, confirming functional stability and sustained esthetic outcomes.



Dr Alejandro Lanis



Initial situation, crown #21 mobile and a horizontal fracture was clinically observed



Tomography revealed a horizontal fracture in tooth #21. Digital planning and design of a surgical guide in coDiagnostiX®



Following the atraumatic extraction the surgical guide was placed, and the drilling protocol was performed



A Straumann BLX™ Implant, Ø 3.5mm x 14mm, Roxolid® was placed. Gap management with Cerabone® and connective tissue graft



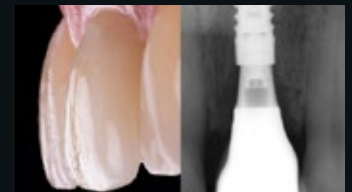
Screw retained immediate provisional restoration



After six months final impression was taken using a scan body and an intraoral scanner



Final screw-retained monolithic zirconia crown restoration in place using Straumann Variobase®



Two-year follow-up, long-term success and stability of the treatment

## Straumann® STARConcept™: digital full-arch rehabilitation using Straumann iGuide™ and Straumann BLX™ implants

Digital full-arch rehabilitation of the maxilla using the Straumann® STARconcept™ workflow. Digital treatment planning was performed using Smilecloud and the Straumann® Smile in a Box® service. Following tooth extraction, selected teeth were temporarily preserved to stabilize the Straumann iGuide™, enabling fully guided immediate placement of Straumann BLX™ implants. After all implants were placed, the remaining teeth were removed, screw-retained abutments were connected, and an immediate full-arch provisional restoration was delivered, providing immediate function and esthetics.



Dr. Wael Att



Dr. Florin Cofar

# Immediate Molar replacement with "Fast Molar Solution"

Hopeless Upper First Molar: Treatment involved planning with the "Fast Molar Solution" solution using the coDiagnostiX® for digital workflow. Minimally invasive extraction was performed, followed by flapless guided surgery and immediate implant placement (Straumann BLX™ Ø 5.0 x 10 mm). Straumann® Anatomic Healing Abutment (WB 1.5GH was immediately placed to optimize soft tissue conditioning during healing. Intraoral scanning was conducted after two months, and the final restoration utilized the "Consistent Emergence Profile", achieving excellent soft tissue response.



**Dr. Christian  
R. Jarry**



**Dr. Dalton  
Marques**



Occlusal view – Hopeless Upper First Molar



Digital planning in coDiagnostiX®



Guided surgery and Immediate Implant placement BLX Ø 5.0 x 10mm SLActive®, Roxolid®



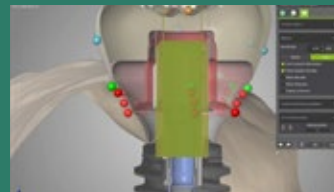
Anatomic Healing Abutment XC WB 1.5 GH \*\*\*\* placed immediately after implant placement



2 months post operative – ready for scanning procedure



Scanning file of Anatomic Healing Abutment XC data in CARES® ready for crown designing



Anatomic Healing Abutment and Variobase® overlapped ensuring consistent emergence profile



Healthy undisturbed soft tissue emergence profile and final crown.



Occlusal view of the maxilla showing the initial clinical situation with non-restorable tooth remnants



Fully guided implant placement using Straumann BLX™ SLActive® Roxolid® implants



All implants in position, secured with iGuide implant drivers, showing parallel alignment



Occlusal view showing all screw-retained abutments in place immediately after surgery



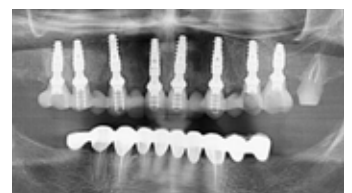
Transfer of the provisional restoration embedded in the prosthetic guide "cage"



"Cage" in the planned position, ready for intraoral connection of temporary cylinders and provisional bridge

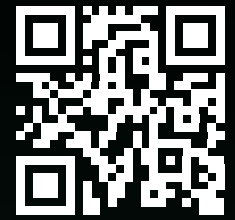


Immediate provisional prosthesis demonstrating optimal esthetics



Postoperative radiograph showing stable implant positioning and provisional restoration

# STRAUMANN BLX™ – CONFIDENCE BEYOND IMMEDIACY.



Discover  
Straumann iEXCEL™

- The winning combination of innovative design and surface technology with high-performance material
- Straumann BLX™ is your gateway to the world of Straumann iEXCEL™, our ultimate Dental Performance System
- Predictable outcomes with results you can trust

## REFERENCES

1 Ioannidis A, Gallucci GO, Jung RE, Borzangy S, Hämmerle CH, Benic GI. Titanium-zirconium narrow-diameter versus titanium regular diameter implants for anterior and premolar single crowns: 3-year results of a randomized controlled clinical study. *J Clin Periodontol*. 2015 Nov;42(11):1060-70. doi: 10.1111/jcpe.12468. Epub 2015 Nov 14. 2 Al-Nawas B, Domagala P, Fragola G, Freiburger P, Ortiz- Vigón A, Rousseau P, Tondela J. A Prospective Noninterventional Study to Evaluate Survival and Success of Reduced Diameter Implants Made From Titanium-Zirconium Alloy. *J Oral Implantol*. 2015 Aug;41(4):e118-25. doi: 10.1563/AAID-JOI-D-13-00149. Epub 2014 Mar 25. 3 Altuna P, Lucas-Taulé E, Gargallo-Albiol J, Figueras-Álvarez O, Hernández-Alfaro F, Nart J. Clinical evidence on titanium-zirconium dental implants: a systematic review and meta-analysis. *Int J Oral Maxillofac Surg*. 2016 Jul;45(7):842-50. doi: 10.1016/j.ijom.2016.01.004. Epub 2016 Feb 3. 4 Raghavendra, S., M.C. Wood, and T.D. Taylor, Early wound healing around endosseous implants: a review of the literature. *Int J Oral Maxillofac Implants*, 2005. 20(3): p. 425-31. 5 Lang, N.P., et al., Early osseointegration to hydrophilic and hydrophobic implant surfaces in humans. *Clin Oral Implants Res*, 2011. 22(4): p. 349-56. 6 Oates, T.W., et al., Enhanced implant stability with a chemically modified SLA surface: a randomized pilot study. *Int J Oral Maxillofac Implants*, 2007. 22(5): p. 755-60. 7 Nicolau, P., et al., 10-year outcomes with immediate and early loaded implants with a chemically modified SLA surface. *Quintessence Int*. 2019 Jan 25;50(2):p. 114-124. 8 Reis, R., et al., Immediate versus early loading protocols of titanium-zirconium narrow-diameter implants for mandibular overdentures in edentulous patients: 1-year results from a randomized controlled trial. *Clin Oral Implants Res*. 2019 Oct;30(10):953-961. 9 Eckert, S.E., et al., Immediately Loaded Fixed Full-Arch Implant-Retained Prosthesis: Clinical Analysis When Using a Moderate Insertion Torque. *Int J Oral Maxillofac Implants*. 2019 May/June;34(3):737-744. 10 Nicolau P, Guerra F, Reis R, Krafft T, Benz K, Jackowski J 10-year results from a randomized controlled multicenter study with immediately and early loaded SLActive implants in posterior jaws. Presented at 25th Annual Scientific Meeting of the European Association of Osseointegration – 29 Sep – 1 Oct 2016, Paris. 11 El Char E, Zhang L, Zhou Y, et al. Osseointegration of Superhydrophilic Implants Placed in Defect Grafted Bones. *International Journal of Oral & Maxillofacial Implants*. Mar/Apr 2019, Vol. 34 Issue 2, p443-450 12 Schwarz, F., et al., Bone regeneration in dehiscence-type defects at chemically modified (SLActive®) and conventional SLA® titanium implants: a pilot study in dogs. *J Clin.Periodontol*. 34.1 (2007): 78-86 13 Nelson, K., Stricker, A., Raguse, J.-D. and Nahles, S. (2016), Rehabilitation of irradiated patients with chemically modified and conventional SLA implants: a clinical clarification. *J Oral Rehabil*, 43: 871-872. doi:10.1111/joor.12434. 14 Norm ASTM F67 (states min. tensile strength of annealed titanium); data on file for Straumann cold-worked titanium and Roxolid® implants. 15 Maniura K. Laboratory for Materials – Biology Interactions Empa, St. Gallen, Switzerland. Protein and blood adsorption on Ti and TiZr implants as a model for osseointegration. EAO 22nd Annual Scientific Meeting; October 17-19; 2013; Dublin.



490.448/en/D/00 02/26

## International Headquarters

Institut Straumann AG  
Peter Merian-Weg 12  
CH-4002 Basel, Switzerland  
Phone +41 (0)61 965 11 11  
Fax +41 (0)61 965 11 01  
www.straumann.com

**iEXCEL**   
STRAUMANN® PERFORMANCE SYSTEM

© Institut Straumann AG, 2026. All rights reserved.

Straumann® and/or other trademarks and logos from Straumann® mentioned herein are the trademarks or registered trademarks of Straumann Holding AG and/or its affiliates.

 **straumann**