

TIME FOR **FLEXIBILITY**  
TITANIUM BASE  
PORTFOLIO



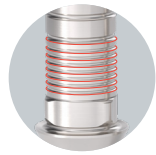
# FOR ENHANCED DENTAL RESTORATIONS

Building on the legacy of the state-of-the-art ASC Flex, the Titanium Base SSC Flex brings our TiBase portfolio to new heights with enhanced features. Offering a straight screw channel and increased flexibility for single and bridge restorations, it comes in both engaging and rotating versions. Its innovative design includes more gingiva height options and a higher cuttable chimney for customization.



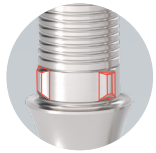
### 1. Customizable Chimney Height

Chimney can be shortened in individual cases from 8.0 mm to 7.0, 6.0, 5.0 and 4.0 mm.



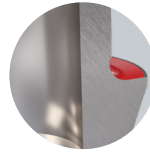
### 2. Groove Design

Designed to increase retention forces vital for crown stability up to 30% without the need for sandblasting.



### 3. Anti-Rotational Lock

Designed to prevent non-desired rotational crown movements.



### 4. Tapered Shoulder Design

Tapered platform to hold the fixing material, thereby reducing the bonding gap in the transitional area to the gingiva.



### 5. Multiple Gingival Height Options\*

GH options from 1 mm to 3 mm for more flexibility.

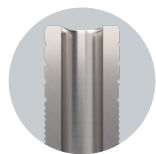


### 6. Rotational Version

For a more diverse range in bridge and bar restorations.

# FOR INCREASED STRENGTH

Introducing the Titanium Base SSC Flex Molar, an extension of the innovative SSC Flex line\*, designed specifically for molar crowns. Its design includes multiple gingiva height options and a cuttable chimney for customization. With original screw heads and compatibility with major implant connections, the Titanium SSC Flex Molar sets a new standard for robust and precise molar crown restorations.



### 1. Increased Wall Thickness\*\*

Designed for enhanced durability.



### 2. Increased Chimney Diameter\*\*

Designed specifically for large molar crowns.



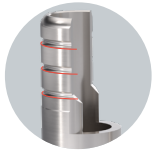
### 3. Wider Platform\*\*

Designed for stronger restoration support.



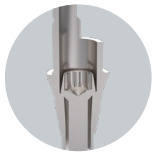
# FOR ESTHETICALLY CHALLENGING CASES

The cutting-edge design of the Titanium Base ASC Flex is meticulously crafted for angulated screw channels, tailored to meet your demanding needs in esthetically challenging prosthetic cases.



### 1. Customizable Chimney Height

Chimney can be shortened in individual cases from 6.5 mm to 5.5, 4.5 and 3.5 mm.



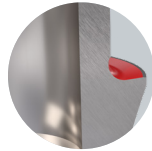
### 2. Screw Channel

Compatible with both angled and straight screw channels.



### 3. Ball Torx Placement Instrument

Allows angulation of up to 25°. Ensures easy and reliable tightening.



### 4. Tapered Shoulder Design

Tapered platform to hold the fixing material, thereby reducing the bonding gap in the transitional area to the gingiva.



### 5. Multiple Gingival Height Options\*

GH options from 1 mm to 3 mm for more flexibility.



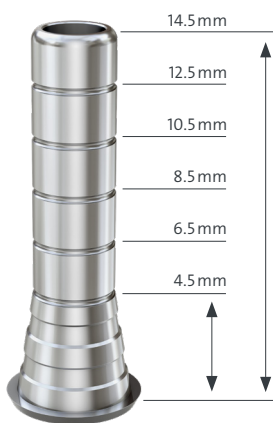
### 6. Rotational Version

For a more diverse range in bridge and bar restorations.



# FOR COMPLEX PROSTHETIC CONFIGURATIONS

Medentika's Abutment-Level Titanium Base options offer maximum design flexibility for full-zirconia restorations. They are available in a straight and angled screw channel options or as a Flex design, which can be adjusted along the length of the chimney for added versatility.



## TITANIUM CAP FLEX

The titanium cap Flex offers a variable chimney height. The 14.5 mm chimney height also supports high restorations, whether for a provisional or definitive restoration. However, this can be individually shortened in 2 mm increments to 4.5 mm. The different chimney heights are defined in the CAD library.



## TITANIUM BASE STRAIGHT AND ASC

For unfavorably positioned implants or in an esthetically demanding site, the screw channel can optionally be moved to the non-visible area.

\*Not all options are available in all series.



## RE-ENGINEERED COMPATIBLE PROSTHETICS.



© MEDENTiKA® GmbH, 2024. All rights reserved.  
MEDENTiKA® and/or other trademarks and logos from MEDENTiKA® mentioned herein  
are the trademarks or registered trademarks of MEDENTiKA® GmbH and/or its affiliates.

Please note that this brochure contains images created by AI.

PM03\_01\_0010/EN 02/25

**MEDENTiKA® GmbH**  
Hammweg 8–10  
76549 Hügelsheim  
Germany  
info@medentika.de  
www.medentika.com

