

BONE TYPE	REGULAR		SHORT		LONG		LONG		LONG		LONG		LONG		LONG	
	CD0324020	CD0324003	CD0324002	CD0324002	CD0324035	CD0324027	CD0326011	CD0324026	CD0326012	CD0324038	CD0324031	CD0326015	CD0324028	CD0326013	CD0324029	CD0326014
✓	✓	✓	✓	✓	✓	✓	✓	✓	✓	✓	✓	✓	✓	✓	✓	✓
✓	✓	✓	✓	✓	✓	✓	✓	✓	✓	✓	✓	✓	✓	✓	✓	✓
✓	✓	✓	✓	✓	✓	✓	✓	✓	✓	✓	✓	✓	✓	✓	✓	✓
✓	✓	✓	✓	✓	✓	✓	✓	✓	✓	✓	✓	✓	✓	✓	✓	✓
✓	✓	✓	✓	✓	✓	✓	✓	✓	✓	✓	✓	✓	✓	✓	✓	✓

**IMPLANT DIAMETER X LENGTH (MM)**

All implant packages come with a cover screw of GH 0

NP	<ul style="list-style-type: none"> <li>Ø 3.5x8 CD0903001</li> <li>Ø 3.5x10 CD0903002</li> <li>Ø 3.5x11.5 CD0903003</li> <li>Ø 3.5x13 CD0903004</li> <li>Ø 3.5x16 CD0903005</li> <li>Ø 3.5x18 CD0903006</li> </ul>	<ul style="list-style-type: none"> <li>Ø 3.75x8 CD0903007</li> <li>Ø 3.75x10 CD0903008</li> <li>Ø 3.75x11.5 CD0903009</li> <li>Ø 3.75x13 CD0903010</li> <li>Ø 3.75x16 CD0903011</li> <li>Ø 3.75x18 CD0903012</li> </ul>	<ul style="list-style-type: none"> <li>Ø 4.0x7 CD0903013</li> <li>Ø 4.0x8 CD0903014</li> <li>Ø 4.0x10 CD0903015</li> <li>Ø 4.0x11.5 CD0903016</li> <li>Ø 4.0x13 CD0903017</li> <li>Ø 4.0x16 CD0903018</li> <li>Ø 4.0x18 CD0903019</li> </ul>	<ul style="list-style-type: none"> <li>Ø 4.3x7 CD0903020</li> <li>Ø 4.3x8 CD0903021</li> <li>Ø 4.3x10 CD0903022</li> <li>Ø 4.3x11.5 CD0903023</li> <li>Ø 4.3x13 CD0903024</li> <li>Ø 4.3x16 CD0903025</li> <li>Ø 4.3x18 CD0903026</li> </ul>	<ul style="list-style-type: none"> <li>Ø 5.0x7 CD0903027</li> <li>Ø 5.0x8 CD0903028</li> <li>Ø 5.0x10 CD0903029</li> <li>Ø 5.0x11.5 CD0903030</li> <li>Ø 5.0x13 CD0903031</li> <li>Ø 5.0x16 CD0903032</li> </ul>
----	-------------------------------------------------------------------------------------------------------------------------------------------------------------------------------------------------------------------	-------------------------------------------------------------------------------------------------------------------------------------------------------------------------------------------------------------------------	----------------------------------------------------------------------------------------------------------------------------------------------------------------------------------------------------------------------------------------------	----------------------------------------------------------------------------------------------------------------------------------------------------------------------------------------------------------------------------------------------	------------------------------------------------------------------------------------------------------------------------------------------------------------------------------------------------------------------

SURGICAL COMPONENTS		PROSTHETIC INSTRUMENTS	
<p><b>Cover Screw 10 N.cm.</b></p> <p>GH 0 CD1703001 NP</p> <p>GH 2.0 CD1703002 SP</p> <p>GH 0 CD1703003 SP</p> <p>GH 2.0 CD1703004 SP</p>	<p><b>Healing Abutment 10 N.cm.</b></p> <p>GH 1.0 CD0603001 NP</p> <p>GH 1.0 CD0603002 NP</p> <p>GH 1.0 CD0603003 NP</p> <p>GH 1.0 CD0603004 NP</p> <p>GH 1.0 CD0603005 NP</p> <p>GH 1.0 CD0603006 NP</p> <p>GH 1.0 CD0603007 NP</p> <p>GH 1.0 CD0603008 NP</p> <p>GH 1.0 CD0603009 NP</p> <p>GH 1.0 CD0603010 NP</p> <p>GH 1.0 CD0603011 NP</p> <p>GH 1.0 CD0603012 NP</p> <p>GH 1.0 CD0603013 NP</p> <p>GH 1.0 CD0603014 NP</p> <p>GH 1.0 CD0603015 NP</p> <p>GH 1.0 CD0603016 NP</p> <p>GH 1.0 CD0603017 NP</p> <p>GH 1.0 CD0603018 NP</p> <p>GH 1.0 CD0603019 NP</p> <p>GH 1.0 CD0603020 NP</p>	<p><b>Angle Measurer 17°</b></p> <p>SHORT CD2818013 NP</p> <p>REGULAR CD2818014 NP</p> <p>LONG CD2818015 NP</p> <p>REGULAR CD2818016 NP</p>	<p><b>Screw Driver Hex 1.2 for Ratchet</b></p> <p>SHORT CD0522003</p> <p>LONG CD0522004</p>

SURGICAL INSTRUMENTS		AUXILIARY INSTRUMENTS	
<p><b>Tapered Implant X-Ray Positioner</b></p> <p>Ø 3.5 CD2917001</p> <p>Ø 3.75 CD2917002</p> <p>Ø 4.0 CD2917003</p> <p>Ø 4.3 CD2917003</p> <p>Ø 5.0 CD2917004</p>	<p><b>Angle Measurer for Drill 2.0</b></p> <p>17° CD2818011</p> <p>30° CD2818012</p>	<p><b>Implant Driver for Hand piece</b></p> <p>REGULAR CD0422006 NP</p> <p>LONG CD0422007 NP</p> <p>SHORT CD0422008 SP</p> <p>LONG CD0422009 SP</p>	<p><b>Torque Wrench / Ratchet</b></p> <p>Adapter Ratchet to Manual CD0521005</p> <p>Adapter Hand Piece to Manual CD0521004</p>

STOPS		CASSETTES	
<p><b>Drill Stops</b></p> <p>Implant length 70mm</p> <p>Ø 2.0 CD0330002</p> <p>Ø 2.0 CD0330003</p> <p>Ø 2.0 CD0330004</p> <p>Ø 3.5 CD0330005</p> <p>Ø 3.5 CD0330006</p> <p>Ø 3.5 CD0330007</p> <p>Ø 3.5 CD0330008</p> <p>Ø 3.5 CD0330009</p> <p>Ø 3.5 CD0330010</p> <p>Ø 3.5 CD0330011</p> <p>Ø 3.5 CD0330012</p> <p>Ø 3.5 CD0330013</p> <p>Ø 3.5 CD0330014</p> <p>Ø 3.5 CD0330015</p> <p>Ø 3.5 CD0330016</p> <p>Ø 3.5 CD0330017</p> <p>Ø 3.5 CD0330018</p> <p>Ø 3.5 CD0330019</p> <p>Ø 3.5 CD0330020</p>	<p><b>Drill Stop</b></p> <p>CD1030001</p> <p>Pre Mounted (cassette + holders + stops) CD1030002</p> <p>Kit (Empty cassette + 5 holders) CD1030003</p> <p>Holder (1 unit) CD1031001</p>	<p><b>Surgical Kit</b></p> <p>The items that compose the Surgical Cassette are marked with </p> <p>CD1001002</p> <p>Empty cassette CD1003001</p> <p>Pre Mounted (33 items) CD1003002</p>	<p><b>Prosthetic Cassette</b></p> <p>The items that compose the Prosthetic Cassette are marked with </p> <p>CD1001002</p> <p>Items that compose the cassette are sold separately.</p>

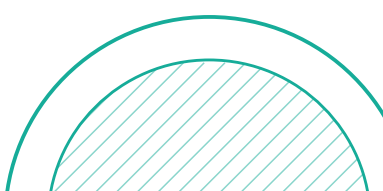
DRIVERS	
<p><b>Screw Driver Hex 1.2 for Ratchet</b></p> <p>1</p>	<p><b>Abutment Driver/Multi Unit Screw Retained Abut. (straight)</b></p> <p>2</p>

RETENTION TYPE	PROSTHETIC OPTION	ABUTMENT SELECTION	IMPRESSION / SCANNING	PROVISIONAL RESTORATION	MODEL	FINAL RESTORATION
Titanium Base	Pre-Milled Abutment/Retain. Base/Retention Holder	<p><b>Crown 20 N.cm. 1</b></p> <p>GH 0.5 GH 1.0 GH 3.0 spare screw</p> <p>NP Ø 3.5 CD0903001 CD0903002 CD0903003</p> <p>SP Ø 4.5 CD0903004 CD0903005 CD0903006</p> <p>Ø 5.5 CD0903007 CD0903008 CD0903009</p> <p>Cementable Height: 6.0 (customization is allowed for 4 mm).</p>	<p><b>Implant Impression Post Crown 10 N.cm. 1</b></p> <p>LAB SCANNING: REGULAR CD0803001 spare screw CD1616002 LONG CD0803002 CD1616003</p> <p>OPENTRAY: NP CD0803003 CD1616004 CD0803006 CD1616005</p> <p>CLOSED TRAY: SP CD0803008 CD1616006 CD0803010 CD1616007</p> <p>INTRAORAL SCANNING: <b>Implant Scantbody 10 N.cm. 1</b> NP CD1103001 SP CD1103002</p>	<p><b>Titanium Temporary Abutment Crown 20 N.cm. 1</b></p> <p>GH 0.5 GH 1.0 GH 3.0 spare screw</p> <p>NP Ø 3.5 CD1303001 CD1303002 CD1303003</p> <p>SP Ø 4.5 CD1303004 CD1303005 CD1303006</p> <p>Ø 5.5 CD1303007 CD1303008 CD1303009</p>	<p><b>Implant Analog</b></p> <p>LAB SCANNING: NP CD0103001 CD0103003 CD0103004</p> <p>CONVENTIONAL MODEL: SP CD0103002</p>	<p>Ø 3.5</p> <p>Ø 4.5</p> <p>Ø 5.5</p> <p>20 N.cm. 1</p>
		<p><b>Bridge 20 N.cm. 1</b></p> <p>GH 0.5 GH 1.0 GH 3.0 spare screw</p> <p>NP Ø 3.5 CD0903010 CD0903011 CD0903012</p> <p>SP Ø 4.5 CD0903013 CD0903014 CD0903015</p> <p>Ø 5.5 CD0903016 CD0903017 CD0903018</p> <p>Cementable Height: 4.5 mm.</p>	<p><b>Implant Impression Post Bridge 10 N.cm. 1</b></p> <p>LAB SCANNING: REGULAR CD0803001 spare screw CD1616002 LONG CD0803002 CD1616003</p> <p>OPENTRAY: NP CD0803003 CD1616004 CD0803006 CD1616005</p> <p>CLOSED TRAY: SP CD0803008 CD1616006 CD0803010 CD1616007</p> <p>INTRAORAL SCANNING: <b>Implant Scantbody 10 N.cm. 1</b> NP CD1103001 SP CD1103002</p>	<p><b>Titanium Temporary Abutment Bridge 20 N.cm. 1</b></p> <p>GH 0.5 GH 1.0 GH 3.0 spare screw</p> <p>NP Ø 3.5 CD1303004 CD1303005 CD1303006</p> <p>SP Ø 4.5 CD1303007 CD1303008 CD1303009</p> <p>Ø 5.5 CD1303010 CD1303011 CD1303012</p>	<p><b>Implant Analog</b></p> <p>CONVENTIONAL MODEL: NP CD0103001 CD0103003 CD0103004</p> <p>MODEL SCANNING: SP CD0103002</p>	<p>Ø 3.5</p> <p>Ø 4.5</p> <p>Ø 5.5</p> <p>20 N.cm. 1</p>
UCLA CoCr Abutment		<p><b>Crown 20 N.cm. 1</b></p> <p>GH 1.0 GH 1.0 / Pack* spare screw</p> <p>NP Ø 3.5 CD2203001 CD2203002 CD2203003</p> <p>SP Ø 4.5 CD2203004 CD2203005 CD2203006</p> <p>Ø 5.5 CD2203007 CD2203008 CD2203009</p> <p>*With 5 units</p>	<p><b>Implant Impression Post Crown 10 N.cm. 1</b></p> <p>LAB SCANNING: REGULAR CD0803001 spare screw CD1616002 LONG CD0803002 CD1616003</p> <p>OPENTRAY: NP CD0803003 CD1616004 CD0803006 CD1616005</p> <p>CLOSED TRAY: SP CD0803008 CD1616006 CD0803010 CD1616007</p> <p>INTRAORAL SCANNING: <b>Implant Scantbody 10 N.cm. 1</b> NP CD1103001 SP CD1103002</p>	<p><b>Titanium Temporary Abutment Crown 20 N.cm. 1</b></p> <p>GH 0.5 GH 1.0 GH 3.0 spare screw</p> <p>NP Ø 3.5 CD1303001 CD1303002 CD1303003</p> <p>SP Ø 4.5 CD1303004 CD1303005 CD1303006</p> <p>Ø 5.5 CD1303007 CD1303008 CD1303009</p>	<p><b>Implant Analog</b></p> <p>LAB SCANNING: NP CD0103001 CD0103003 CD0103004</p> <p>CONVENTIONAL MODEL: SP CD0103002</p>	<p>Ø 3.5</p> <p>Ø 4.5</p> <p>Ø 5.5</p> <p>20 N.cm. 1</p>
		<p><b>Bridge 20 N.cm. 1</b></p> <p>GH 1.0 GH 1.0 / Pack* spare screw</p> <p>NP Ø 3.5 CD2203001 CD2203002 CD2203003</p> <p>SP Ø 4.5 CD2203004 CD2203005 CD2203006</p> <p>Ø 5.5 CD2203007 CD2203008 CD2203009</p> <p>*With 5 units</p>	<p><b>Implant Impression Post Bridge 10 N.cm. 1</b></p> <p>LAB SCANNING: REGULAR CD0803001 spare screw CD1616002 LONG CD0803002 CD1616003</p> <p>OPENTRAY: NP CD0803003 CD1616004 CD0803006 CD1616005</p> <p>CLOSED TRAY: SP CD0803008 CD1616006 CD0803010 CD1616007</p> <p>INTRAORAL SCANNING: <b>Implant Scantbody 10 N.cm. 1</b> NP CD1103001 SP CD1103002</p>	<p><b>Titanium Temporary Abutment Bridge 20 N.cm. 1</b></p> <p>GH 0.5 GH 1.0 GH 3.0 spare screw</p> <p>NP Ø 3.5 CD1303004 CD1303005 CD1303006</p> <p>SP Ø 4.5 CD1303007 CD1303008 CD1303009</p> <p>Ø 5.5 CD1303010 CD1303011 CD1303012</p>	<p><b>Implant Analog</b></p> <p>CONVENTIONAL MODEL: NP CD0103001 CD0103003 CD0103004</p> <p>MODEL SCANNING: SP CD0103002</p>	<p>Ø 3.5</p> <p>Ø 4.5</p> <p>Ø 5.5</p> <p>20 N.cm. 1</p>
Cement Retained Abutment		<p><b>Angled 20 N.cm. 1</b></p> <p>GH 2.0 GH 3.0 GH 2.0 GH 3.0 spare screw</p> <p>NP Ø 3.5 CD1403001 CD1403002 CD1403003</p> <p>SP Ø 4.5 CD1403004 CD1403005 CD1403006</p> <p>Ø 5.5 CD1403007 CD1403008 CD1403009</p>	<p><b>Implant Impression Post Crown 10 N.cm. 1</b></p> <p>LAB SCANNING: REGULAR CD0803001 spare screw CD1616002 LONG CD0803002 CD1616003</p> <p>OPENTRAY: NP CD0803003 CD1616004 CD0803006 CD1616005</p> <p>CLOSED TRAY: SP CD0803008 CD1616006 CD0803010 CD1616007</p> <p>INTRAORAL SCANNING: <b>Implant Scantbody 10 N.cm. 1</b> NP CD1103001 SP CD1103002</p>	<p><b>Titanium Temporary Abutment Crown 20 N.cm. 1</b></p> <p>GH 0.5 GH 1.0 GH 3.0 spare screw</p> <p>NP Ø 3.5 CD1303001 CD1303002 CD1303003</p> <p>SP Ø 4.5 CD1303004 CD1303005 CD1303006</p> <p>Ø 5.5 CD1303007 CD1303008 CD1303009</p>	<p><b>Implant Analog</b></p> <p>LAB SCANNING: NP CD0103001 CD0103003 CD0103004</p> <p>CONVENTIONAL MODEL: SP CD0103002</p>	<p>Ø 3.5</p> <p>Ø 4.5</p> <p>Ø 5.5</p> <p>20 N.cm. 1</p>
		<p><b>Straight 20 N.cm. 1</b></p> <p>GH 1.0 GH 2.0 GH 3.0 spare screw</p> <p>NP Ø 3.5 CD1403001 CD1403002 CD1403003</p> <p>SP Ø 4.5 CD1403004 CD1403005 CD1403006</p> <p>Ø 5.5 CD1403007 CD1403008 CD1403009</p>	<p><b>Implant Impression Post Crown 10 N.cm. 1</b></p> <p>LAB SCANNING: REGULAR CD0803001 spare screw CD1616002 LONG CD0803002 CD1616003</p> <p>OPENTRAY: NP CD0803003 CD1616004 CD0803006 CD1616005</p> <p>CLOSED TRAY: SP CD0803008 CD1616006 CD0803010 CD1616007</p> <p>INTRAORAL SCANNING: <b>Implant Scantbody 10 N.cm. 1</b> NP CD1103001 SP CD1103002</p>	<p><b>Titanium Temporary Abutment Crown 20 N.cm. 1</b></p> <p>GH 0.5 GH 1.0 GH 3.0 spare screw</p> <p>NP Ø 3.5 CD1303001 CD1303002 CD1303003</p> <p>SP Ø 4.5 CD1303004 CD1303005 CD1303006</p> <p>Ø 5.5 CD1303007 CD1303008 CD1303009</p>	<p><b>Implant Analog</b></p> <p>LAB SCANNING: NP CD0103001 CD0103003 CD0103004</p> <p>CONVENTIONAL MODEL: SP CD0103002</p>	<p>Ø 3.5</p> <p>Ø 4.5</p> <p>Ø 5.5</p> <p>20 N.cm. 1</p>
Multi Unit Screw Retained Abutment 3.5		<p><b>3.5 32 N.cm. 2</b></p> <p>GH 1.0 GH 2.0 GH 3.0</p> <p>NP Ø 3.5 CD1503001 CD1503002 CD1503003</p>	<p><b>Multi unit Screw retained Abutment Impression Post 10 N.cm. 1</b></p> <p>OPENTRAY: NP Ø 3.5 CD0806001 CD1616001</p> <p>Multi unit Screw retained Abutment Scantbody 10 N.cm. 1 CD1107001</p>	<p><b>Cement Retained Provisional Coping 10 N.cm. 1</b></p> <p>NP Ø 3.5 CD1808002</p> <p>SP Ø 4.5 CD1808004</p>	<p><b>Implant Analog</b></p> <p>LAB SCANNING: NP CD0103001 CD0103003 CD0103004</p> <p>CONVENTIONAL MODEL: SP CD0103002</p>	<p>Ø 3.5</p> <p>Ø 4.5</p> <p>Ø 5.5</p> <p>20 N.cm. 1</p>
		<p><b>Multi Unit Screw Retained Abutment 3.5</b></p> <p>NP Ø 3.5 CD1503001 CD1503002 CD1503003</p>	<p><b>Multi unit Screw retained Abutment Impression Post 10 N.cm. 1</b></p> <p>OPENTRAY: NP Ø 3.5 CD0806001 CD1616001</p> <p>Multi unit Screw retained Abutment Scantbody 10 N.cm. 1 CD1107001</p>	<p><b>Titanium Temporary Abutment Crown 20 N.cm. 1</b></p> <p>GH 0.5 GH 1.0 GH 3.0 spare screw</p> <p>NP Ø 3.5 CD1303001 CD1303002 CD1303003</p> <p>SP Ø 4.5 CD1303004 CD1303005 CD1303006</p> <p>Ø 5.5 CD1303007 CD1303008 CD1303009</p>	<p><b>Implant Analog</b></p> <p>LAB SCANNING: NP CD0103001 CD0103003 CD0103004</p> <p>CONVENTIONAL MODEL: SP CD0103002</p>	<p>Ø 3.5</p> <p>Ø 4.5</p> <p>Ø 5.5</p> <p>20 N.cm. 1</p>
Multi Unit Screw Retained Abutment 4.8		<p><b>Angled 20 N.cm. 1</b></p> <p>GH 1.0 GH 2.0 GH 3.0 GH 4.0 GH 5.0 spare screw</p> <p>NP Ø 4.8 CD1503001 CD1503002 CD1503003 CD1503004 CD1503005</p> <p>SP Ø 4.8 CD1503006 CD1503007 CD1503008 CD1503009 CD1503010</p>	<p><b>Multi unit Screw retained Abutment Impression Post 10 N.cm. 1</b></p> <p>OPENTRAY: NP Ø 4.8 CD0806001 CD1616001</p> <p>Multi unit Screw retained Abutment Scantbody 10 N.cm. 1 CD1106001</p>	<p><b>Protection Cylinder for Multi unit Screw Retained Abut. 3.5 10 N.cm. 1</b></p> <p>NP Ø 3.5 CD0607001</p>	<p><b>Implant Analog</b></p> <p>LAB SCANNING: NP CD0103001 CD0103003 CD0103004</p> <p>CONVENTIONAL MODEL: SP CD0103002</p>	<p>Ø 3.5</p> <p>Ø 4.5</p> <p>Ø 5.5</p> <p>20 N.cm. 1</p>
		<p><b>Multi Unit Screw Retained Abutment 4.8</b></p> <p>NP Ø 4.8 CD1503001 CD1503002 CD1503003 CD1503004 CD1503005</p> <p>SP Ø 4.8 CD1503006 CD1503007 CD1503008 CD1503009 CD1503010</p>	<p><b>Multi unit Screw retained Abutment Impression Post 10 N.cm. 1</b></p> <p>OPENTRAY: NP Ø 4.8 CD0806001 CD1616001</p> <p>Multi unit Screw retained Abutment Scantbody 10 N.cm. 1 CD1106001</p>	<p><b>Titanium Coping Multi unit Screw Retained Abut. 3.5 10 N.cm. 1</b></p> <p>NP Ø 3.5 CD1807002 CD1807003</p> <p>SP Ø 4.5 CD1807004 CD1807005</p>	<p><b>Implant Analog</b></p> <p>LAB SCANNING: NP CD0103001 CD0103003 CD0103004</p> <p>CONVENTIONAL MODEL: SP CD0103002</p>	<p>Ø 3.5</p> <p>Ø 4.5</p> <p>Ø 5.5</p> <p>20 N.cm. 1</p>
Titanium Base C (for Cerv)		<p><b>Crown 20 N.cm. 1</b></p> <p>GH 0.5 GH 1.0 GH 3.0 spare screw</p> <p>NP Ø 4.65 CD3503025 CD3503026 CD3503027</p> <p>SP Ø 4.65 CD3503028 CD3503029 CD3503030</p>	<p><b>Multi unit Screw retained Abutment Impression Post 10 N.cm. 1</b></p> <p>OPENTRAY: NP Ø 4.8 CD0806001 CD1616001</p> <p>Multi unit Screw retained Abutment Scantbody 10 N.cm. 1 CD1106001</p>	<p><b>Protection Cylinder for Multi unit Screw Retained Abut. 4.8 10 N.cm. 1</b></p> <p>NP Ø 4.8 CD0806001</p>	<p><b>Implant Analog</b></p> <p>LAB SCANNING: NP CD0103001 CD0103003 CD0103004</p> <p>CONVENTIONAL MODEL: SP CD0103002</p>	<p>Ø 4.8</p> <p>Ø 5.5</p> <p>20 N.cm. 1</p>
		<p><b>32 N.cm. 1</b></p> <p>GH 1.0 GH 2.0 GH 3.0 GH 4.0 GH 5.0 spare screw</p> <p>NP CD0203011 CD0203012 CD0203013 CD0203014 CD0203015</p> <p>SP CD0203016 CD0203017 CD0203018 CD0203019 CD0203020</p>	<p><b>Multi unit Screw retained Abutment Impression Post 10 N.cm. 1</b></p> <p>OPENTRAY: NP Ø 4.8 CD0806001 CD1616001</p> <p>Multi unit Screw retained Abutment Scantbody 10 N.cm. 1 CD1106001</p>	<p><b>Titanium Coping Multi unit Screw Retained Abut. 4.8 10 N.cm. 1</b></p> <p>NP Ø 4.8 CD1806001 CD1806002</p> <p>SP Ø 5.5 CD1806003 CD1806004</p>	<p><b>Implant Analog</b></p> <p>LAB SCANNING: NP CD0103001 CD0103003 CD0103004</p> <p>CONVENTIONAL MODEL: SP CD0103002</p>	<p>Ø 4.8</p> <p>Ø 5.5</p> <p>20 N.cm. 1</p>

**nuvo**<sup>TM</sup>  
Simplicity made accessible.



**ConicalFIT**<sup>TM</sup>







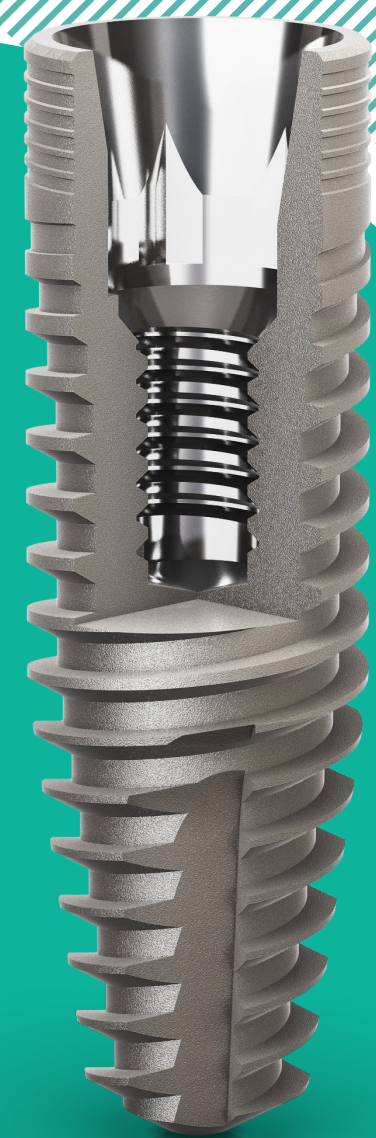
Simplicity made accessible.

Bringing everyone the possibility to smile, the **NUVO™** Implant System is designed to offer reliability based on proven concepts with simplicity, versatility while offering affordability.

- Global Implant brand**  
In more than 50 countries
- Proven technologies**  
With more than 500 scientific articles
- Accessible therapy**  
Affordability and convenience in implant treatment

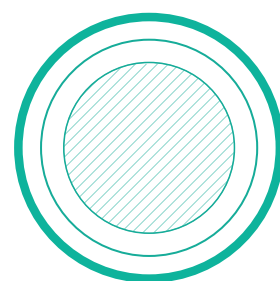
## ConicalFIT™

The **NUVO™ ConicalFIT™** features an internal conical connection in a naturally tapered body design maximizing treatment versatility and simplicity in all bone types. The **NUVO™** Implant System offers a comprehensive prosthetic portfolio covering all indications.



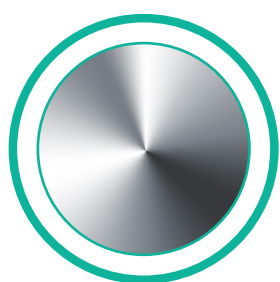
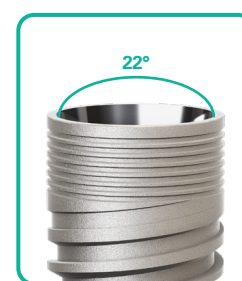
## Proven

The **NUVO™ ConicalFIT™** combines proven concepts in dentistry: the tight sealed conical connection, titanium grade 4 commercially pure (CP) and the well documented sand blasted and acid etched surface treatment.



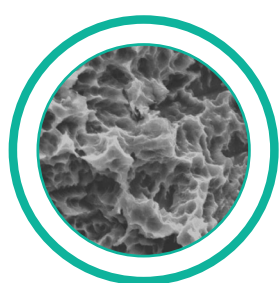
### Conical Connection

**NUVO™ ConicalFIT™** offers a secure fit between abutment and implant with a tapered 22 degrees connection, as well as featuring the platform-switching concept. It combines an anti-rotational engagement through an index allowing a proper abutment positioning.



### Pure Titanium Grade 4

**NUVO™** Implants are produced out from the most commercially pure and mechanically strong titanium grade 4 (Ti gr4 CP).



### Sand Blasted & Acid Etched Surface

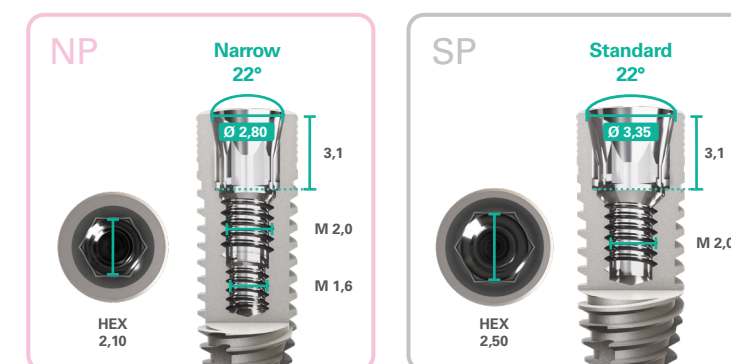
**NUVO™** implants are treated with the well documented sandblasting and acid etched surface treatment, resulting from a highly controlled and validated process.

## Simple

Simple as it should be, **NUVO™ ConicalFIT™** features simplified and precise prosthetic platforms, adding confidence on prosthetic handling, while offering a complete color-coded system, from bone bed preparation up to abutment selection. Adding confidence and accuracy with an intuitive and secure drill stop solution.

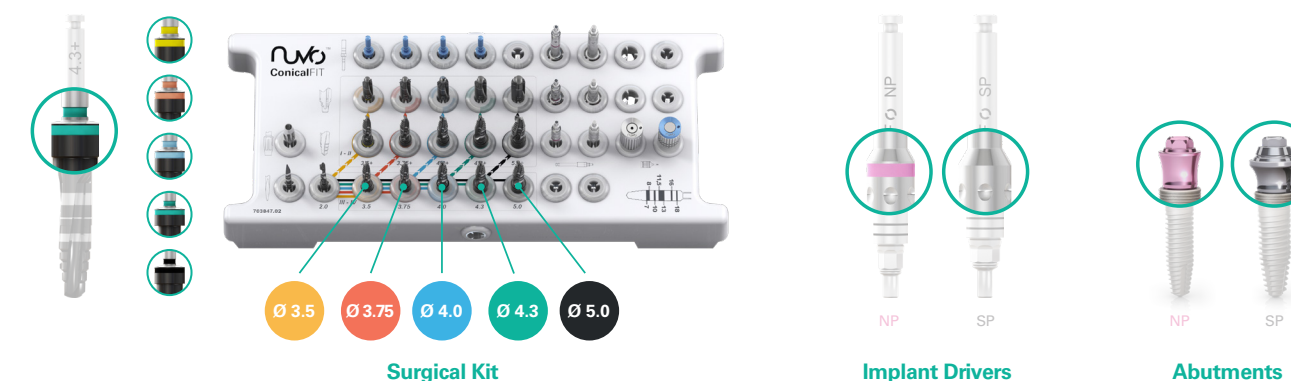
### Simplified and Precise Prosthetic Platforms

The **NUVO™** internal conical connection, **ConicalFIT™**, is made even simpler, with 2 prosthetic platforms covering all demanding indication, and even safer by featuring differentiated internal threads designs to avoid platform mismatching on the abutment placement.



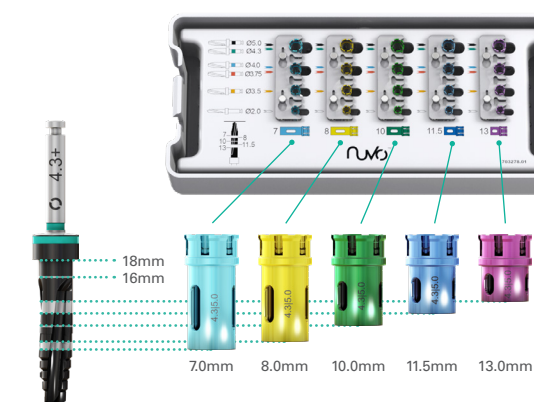
### Color Coded System

The **NUVO™ ConicalFIT™** offers a fully color-coded system, which allows an intuitive product identification and selection, from drilling to implant placement and fixtures.



### Intuitive and Secure drill stop solution

Facilitating the identification of the drill sequence, the diameter and length of the implant combined to a simple pick and drop mechanism, the **NUVO™** Drill Stop solution is designed to accuracy on drilling depth on the surgical procedures, with the possibility of multiple uses.



## Versatile

The **NUVO™** implant system enables versatility by offering a naturally tapered implant design, designed to cover all mouth regions with numerous implant dimension options. The versatile restorative options are designed to restore even the most demanding indications with a comprehensive prosthetic portfolio.

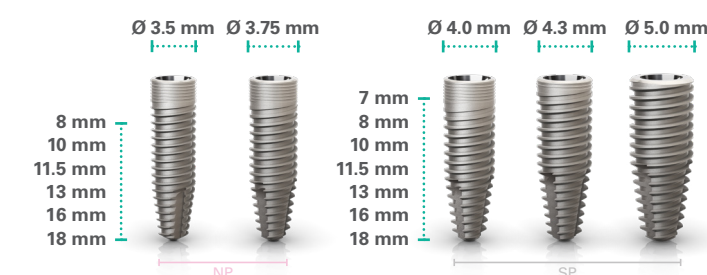


### Tapered Implant Design

**NUVO™** Implant System features a bone level naturally tapered design, maximizing treatment options and efficiency regardless of the bone density.

### Comprehensive Implant Portfolio

**NUVO™** Implants are designed for all indications, by offering a full range of diameters and lengths. Designed to optimize the surgical procedure the implant packaging comes already with a cover screw.



### Comprehensive Prosthetic Portfolio

**NUVO™ ConicalFIT™** implants offer a comprehensive prosthetic portfolio designed to meet the patient's needed treatment, while allowing a reduced complexity on prosthetic handling by working on all screws with only one screwdriver.

- Indication Type:** From single to edentulous;
- Retention Type:** From screw to cement retained;
- Workflow Type:** From conventional to digital.

