



Straumann® ImmediaXy
Taking immediacy
to the next level.



END-TO-END

Straumann® ImmediaXy covers and seamlessly connects all stages of the workflow: Data Acquisition, Planning&Design, Surgery and Restoration.



CONFIDENCE

ImmediaXy capitalizes on Straumann's scientific approach, proven expertise and evidence-based solutions.^{4,5}



EFFICIENCY

Straumann® ImmediaXy puts operational simplicity and workflow optimization at the core of its solutions, whether digital, surgical or restorative.

Taking immediacy to the next level.

Patients' increasing demand for shorter treatment times, the growing evidence for predictable long-term success, and the positive effects on productivity and growth have made immediate treatment protocols a popular choice in implant dentistry.

Backed by its scientific approach and building on its legacy of innovation, Straumann® now takes immediacy to the next level of reliability and efficiency.

With ImmediaXy, Straumann® offers an ecosystem of solutions that are designed to enable dental professionals to confidently and efficiently provide their patients with immediate temporization – whenever possible and clinically sensible, whether in single tooth, multiple teeth or full-arch cases.¹⁻³

Discover how ImmediaXy can support you, for the benefit of your patients and the success of your business.



COMPREHENSIVE PARTNERSHIP

As a true partner, Straumann® offers service, training and practice growth initiatives in combination with excellent products and solutions.

“More than just a one-stop supplier, Straumann® is a trusted, long-term partner who provides service, training and marketing support to help you grow your practice.”



Data Acquisition



Virtuo Vivo™



3Shape® Trios® 3

IN-HOUSE

OUTSOURCED

Straumann® ImmediaXy covers all stages of an immediate treatment workflow: Data Acquisition, Planning & Design, Surgery and Restoration. It provides end-to-end solutions, which are designed to enable immediate treatments with predictable outcomes, even in challenging indications.^{1,3}

ImmediaXy makes the benefits of digital dentistry accessible – either in-house or outsourced – and is compatible with third-party solutions. A modular system, that can be tailored to support your workflow.

End-to-end solutions – whatever your workflow.



Planning & Design



Surgical planning: coDiagnostiX®



Surgery



Implant system: BLX



Restoration



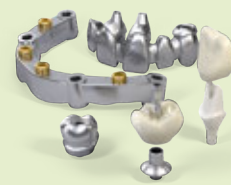
Milling machine: C series



Prosthetic design: CARES® Visual



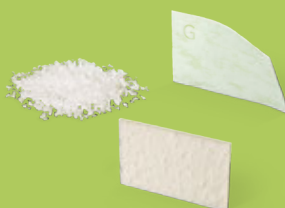
Roxolid® – SLActive®



CARES® Materials



3D printer: P series



Biomaterials



Smile in a Box



Data acquisition made easy.

Straumann® Virtuo Vivo™

Our newest compact and light-weight intraoral scanner

- Scans a dentate full arch in just two minutes or a quadrant in under 45 seconds
- Compact handpiece: greater convenience and comfort for the patient
- Validates data quality in real time
- Powderless intraoral scanning in real color



3Shape® Trios® 3

Rock your practice

- Fast and easy to use to ensure patient comfort
- Accurate color impressions incl. teeth shade measurements
- Available as a wireless version with long-lasting, rechargeable batteries
- Wide variety of indications, restorative options and materials



Efficient planning and design.

coDiagnostiX®

More than an implant planning software, coDiagnostiX® is a practice differentiator.

- Enables precise and easy planning for predictable results from simple to advanced cases
- Offers numerous functions, e.g. drill guide design, automatic nerve canal detection and distance monitoring



DWOS® Synergy

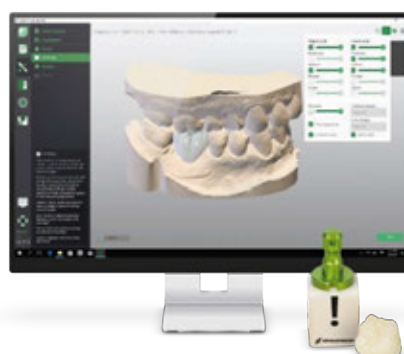
Efficient treatment outcomes through collaborative planning

- Integrates surgical and prosthetic workflows through real-time case sharing between coDiagnostiX® and CARES® Visual
- This enables prosthetically-driven implant planning and immediate provisional design

CARES® Visual

Open design software solution

- Compatible with intraoral scanners, impression scanners and milling machines
- Supports a wide range of applications
- Allows for input and output of STL for third-party systems



CARES® P series

For fast and professional in-house production of premium-quality dental products.

- Full control over the production process
- Adaptable to meet your individual needs
- Improves workflow efficiency and reduces turnaround time
- Builds a complete solution from printing to post-processing with P wash and P cure



Advanced surgical solutions.

Straumann® BLX

An implant system perfected for immediate treatments

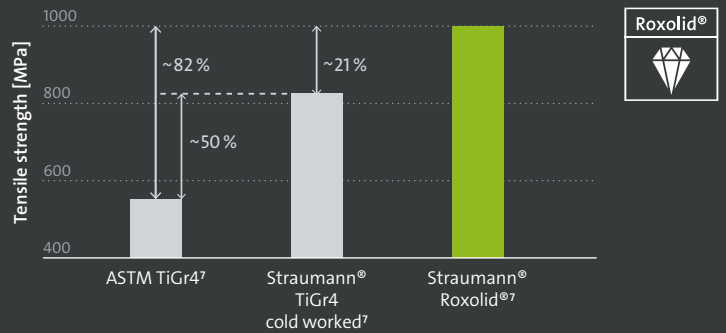
- Dynamic Bone Management: An outstanding design concept developed for immediate protocols in all bone types
- Esthetic Ease Concept: A simple yet versatile portfolio with one connection for all diameters and under-contoured prosthetics for excellent soft-tissue management
- Full digital integration for an optimized workflow



Roxolid®

Setting new standards. Reducing invasiveness⁶

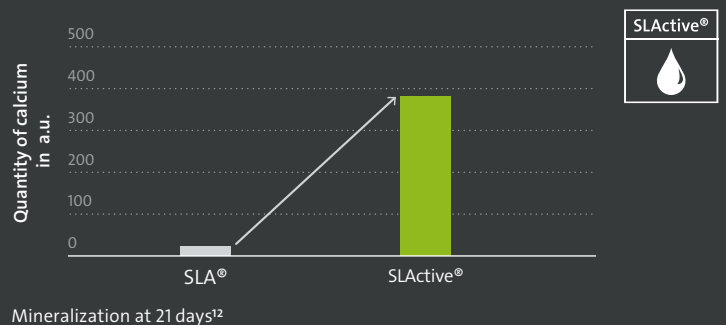
- High-performance alloy of 85% titanium and 15% zirconium
- Higher tensile⁷ and fatigue strength⁸ than comparable titanium implants
- Designed to treat challenging anatomical situations in narrow interdental spaces



SLActive®

For high predictability and accelerated osseointegration

- Hydrophilic surface treatment
- Reduces healing time from 6–8 weeks to 3–4 weeks¹⁰
- Ultra-fine topography and increased surface area
- Implant survival rate in immediate loading after 10 years: 98.2 %¹¹



Straumann® Biomaterials

Advanced solutions for immediate treatment protocols:

- **Straumann® XenoGraft:** Natural, bovine bone substitute for extended stability
- **Jason® membrane:** Thin and tear-resistant membrane with a long barrier function, derived from native collagen from porcine pericardium
- **mucoDerm®:** Stable, easy-to-handle collagen matrix derived from porcine dermis for soft-tissue augmentation; it reduces morbidity and increases patient comfort compared to autogenous grafts





High restorative versatility.

CARES® C series

Precision meets power

- Robust and compact, 4-axis, wet milling and grinding equipment for in-house processing
- Wide variety of indications, restorative options and materials
- Highly efficient processing of hybrid materials with maximum precision



CARES® Materials

A leading offering

- A wide range of dental materials and treatment options that covers all indications and workflows
- Guaranteed high quality to ensure a predictable prosthetic outcome



THE BENEFITS OF DIGITAL JUST A FEW CLICKS AWAY



Smile in a Box – Create your own mix

Our digital, modular, integrated treatment planning and manufacturing service to cover your surgical and prosthetic indications. You select the services you require, and we deliver everything you need for your treatment in one box. Your modular alternative to in-house production.



Data
Acquisition

Planning &
Design

Surgery

Restoration



ImmediaXy in practice.

Replacement of a deciduous canine with immediate, computer-guided implant placement and immediate prosthesis.

- 31 year-old female
- Complex anatomy due to impacted tooth 23
- Deciduous tooth 23 still in place and mobile
- Patient's wish for short treatment and high esthetics at all times



Dr Sergio Piano
DDS, Genoa, Italy

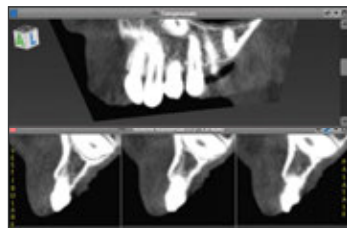
Acknowledgements: Alessandro Giacometti, dental technician (Genova, Italy) and Dr Luca Repetto, DDS (Genova, Italy)



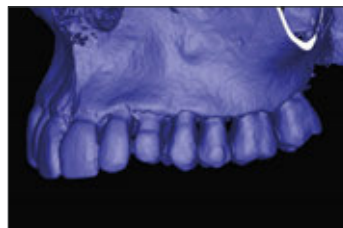
DATA ACQUISITION



Initial situation with deciduous tooth 23



The CBCT exam shows the impacted canine and limited space available



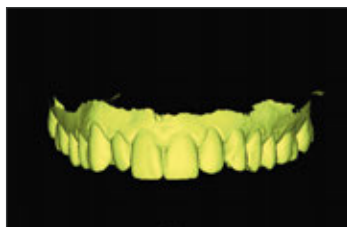
Assessment of bone availability with CBCT



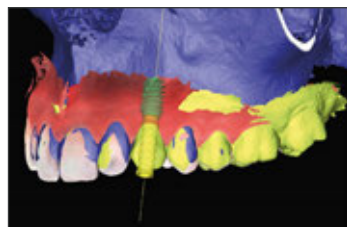
Optical impression with Virtuo Vivo™



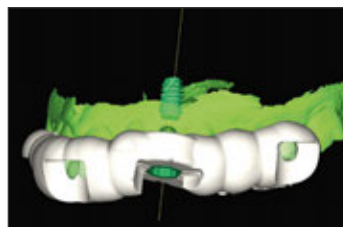
PLANNING & DESIGN



Digital wax-up of tooth 23



Superimposition of the files in coDiagnostiX® to plan the implant and temporary abutment



Design of surgical guide based on correct sleeve alignment



The guide is printed and the sleeve is glued into place



SURGERY



Simple extraction due to root resorption



Fully-guided drilling with VeloDrill™ system



Guided placement of a BLX implant (4.5mm x 8mm)



Occlusal view after implant placement



RESTORATION



Provisional crown fitted on resin model



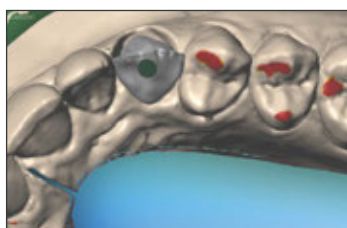
The provisional crown is accurately placed on the abutment with a mask



Provisional crown in place, out of occlusion



The post-operative X-ray confirms the precise placement



Design of final crown in DWOS® CAD/CAM



Final, screw-retained zirconia crown on Variobase®



Esthetic integration of the final crown



The patient's smile at the end of the treatment

Replacement of two maxillary second premolars with immediate implant placements and immediate prostheses.

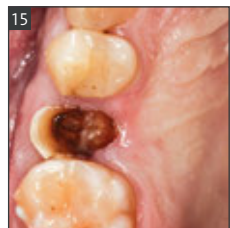
- 45 year-old male
- Fractured teeth 15 and 25
- Healthy situation
- Good bone availability
- Thick buccal bone plate



Dr Juan Blanco
MD, DDS, MSc, PhD,
Santiago de Compostela
Spain

Co-authors: Dr Iria Darriba, DDS, MSc (Santiago de Compostela, Spain) and Javier Pérez, dental technician (Lugo, Spain)

DATA ACQUISITION



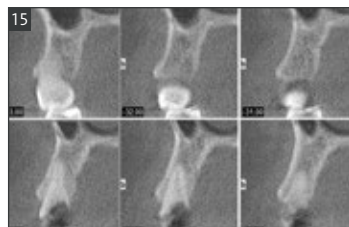
Initial situation



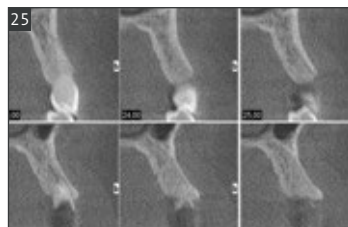
X-ray examination



PLANNING & DESIGN



The CBCT analysis shows the favourable bone situation and alignment between roots and alveolar crests



Design of both provisional crowns with 3Shape Dental System®



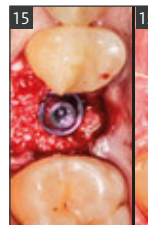
SURGERY



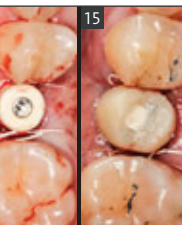
Atraumatic extractions of both teeth: with a flap for tooth 15 and flapless for tooth 25



Insertion of BLX implants (3.75 mm x 12 mm) and gap filling with Straumann® XenoGraft



Placement of two 2.5mm-high, screw-retained abutments, healing caps and provisional crowns.



RESTORATION



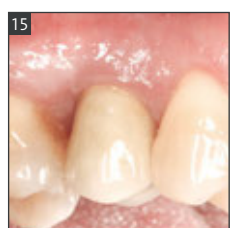
Digital impression to prepare the final restorations



Try-in of the final crowns



Emergence profiles prior to crown fitting



Final crowns and good gingival contouring after 6 months



X-ray after 6 months



Straumann® ImmediaXy

Taking immediacy to the next level.

- End-to-end solutions
- Confidence backed by science
- Efficiency through simplicity
- A comprehensive partnership

REFERENCES

1 Eckert SE, Hueler G, Sandler N, Elkattah R, McNeil DC. Immediately Loaded Fixed Full-Arch Implant-Retained Prosthesis: Clinical Analysis When Using a Moderate Insertion Torque. Int J Oral Maxillofac Implants. 2019 May/June;34(3):737-744. 2 Piano S, Romeo E, Sbricoli L, Pisoni G, Cea N, Lops D. Simplified procedure for the immediate loading of a complete fixed prosthesis supported by four implants in the maxillary jaw: a 2-year prospective study. Clin. Oral Impl. Res. 2016 Dec;27(12):e154-e160. 3 French D, Larjava H, Ofec R. Retrospective cohort study of 4591 Straumann implants in private practice setting, with up to 10-year follow-up. Part 1: multivariate survival analysis. Clin. Oral Impl. Res. 2015 Nov;26(11):1345-1354. 4 Chiapasco M, Casentini P, Zaniboni M, Corsi E, Anello T. Titanium-zirconium alloy narrow-diameter implants (Straumann Roxolid®) for the rehabilitation of horizontally deficient edentulous ridges: prospective study on 18 consecutive patients. Clin Oral Implants Res. 2012 Oct;23(10):1136-41. 5 Quirynen M, Al-Nawas B, Meijer HJA, Razavi A, Reichert TE, Schimmel M, Storelli S, Romeo E. Small-diameter titanium Grade IV & titanium-13zirconium implants in edentulous mandibles: 3-year results from a double-blind, randomized controlled trial. Clin Oral Implants Res. 2015 Jul;26(7):831-40. 6 When guided bone regeneration can be avoided 7 Data on file 8 Medvedev A, Molotnikov A, Lapovok R, Zeller R, Berner S, Habersetzer P, Dalla Torre S. Microstructure and mechanical properties of Ti-15Zr alloy used as dental implant material. J Mech Behav Biomed Mater. 2016 Sep; 62:384-398. 9 Norm ASTM F67 (states min. tensile strength of annealed titanium); data on file for Straumann cold-worked titanium and Roxolid® implants. 10 Compared to SLA® 11 Nicolau P, Guerra F, Reis R, Krafft T, Benz K, Jackowski J. 10-year outcomes with immediate and early loaded implants with a chemically modified SLA surface. Quintessence Int. 2019 Jan 25;50(2):114-124. 12 Katharina Maniura. Laboratory for Materials – Biology Interactions Empa, St. Gallen, Switzerland. Protein and blood adsorption on Ti and TiZr implants as a model for osseointegration. EAO 22nd Annual Scientific Meeting, October 17–19 2013, Dublin.

International Headquarters

Institut Straumann AG
Peter Merian-Weg 12
CH-4002 Basel, Switzerland
Phone +41 (0)61 965 11 11
Fax +41 (0)61 965 11 01
www.straumann.com

Virtuo Vivo™, DWOS® and coDiagnostiX® are trademarks or registered trademarks of Dental Wings Inc., Montreal, Canada. VeloDrill™, CARES®, Variobase®, Roxolid®, SLA® and SLActive® are trademarks or registered trademarks of Institut Straumann AG, Basel, Switzerland. 3Shape® and Trios® are registered trademarks of 3Shape A/S, Copenhagen, Denmark.

© Institut Straumann AG, 2020. All rights reserved.

Straumann® and/or other trademarks and logos from Straumann® mentioned herein are the trademarks or registered trademarks of Straumann Holding AG and/or its affiliates.

