

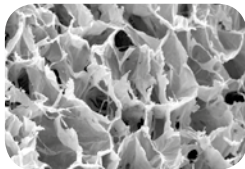
collacone®

COLLAGEN HEMOSTAT (CONE)

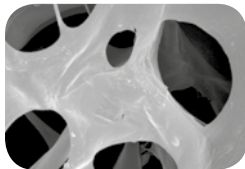


collacone® is a wet-stable and moldable cone made of natural collagen, developed for application in fresh extraction sockets. collacone® stabilizes the blood coagulum forming in the alveole, therefore naturally helping to stop and control the bleeding.

SEM: collacone®



The cone was specially formed to fit into the socket, protecting the wound area from food and bacteria. collacone® is resorbed within about two to four weeks.



SEM: collacone® collagen fibers
three-dimensional network

The healing of the extraction socket starts with the formation of a blood coagulum, followed by the infiltration of fibroblasts and is continuously replaced, first by a provisional matrix and then by bone. The spongy structure of collacone® serves as an ideal matrix for the adhesion of fibroblasts, osteoblasts and thrombocytes, and promotes the ingrowth of blood vessels, thus supporting bony regeneration of the socket. collacone® application is particularly beneficial in hemostatic compromised patients to prevent post-operative bleeding events.



collacone®: wet-stable, fast uptake of blood and stabilization of the blood coagulum

INDICATIONS:

Implantology,
Periodontology and
CMF Surgery

- Closure of extraction sites
- Biopsy harvesting sites
- Minor oral wounds

Properties

- Resorption within two to four weeks
- Stabilization of blood clot and efficient local hemostasis
- Maintains integrity in the presence of blood and during application
- Wound protection
- Supports wound healing
- Natural collagen cone

Product Specifications

collacone®

Art.-No.	Shape	Dimension	Content
511112		~16 mm height, width on top ~11 mm, bottom width ~7 mm	12 pieces (single sterile units)



Clinical use of collacone®